

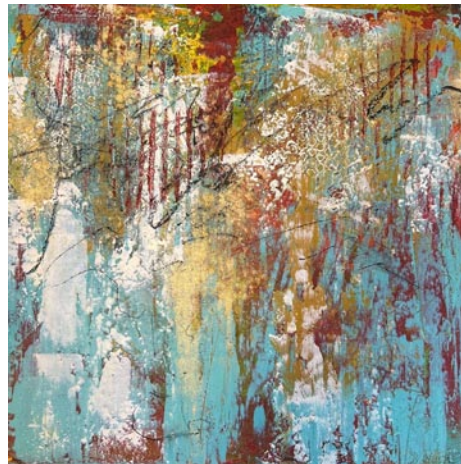
# NC Commercial Galleries

continued from Page 53

Kevin Snipes, Frank Vickery, Holly Walker, Kari Woolsey, and Kensuke Yamada. This year's Ceramics Invitational highlights 24 artists working in the medium of clay. **Lower Level Gallery, Through Dec. 27** - "Inside and Out," featuring works by Peter Alberice, Ken Baskin, Tamie Beldue, Bill Green, Ted Lott, and BA Thomas. This group exhibition sheds light on the nature of interiority within built structures. Featured artwork includes ceramic sculptures, graphite drawings, digital photography, and paintings. **Small Format Gallery, Through Dec. 27** - "Rickie Barnett and Lynne Hobaica: Shared Stories". Multidisciplinary artists, Lynne Hobaica and Rickie Barnett, come together to exhibit their individual and collaborative works. In this exhibition you can find a woodland creature riding a masked chicken, or a toothy, beaked monster fondly clutching a sandwich. **Showcase Gallery, Through Dec. 27** - "Peter Van Dyck". Philadelphia based painter, Peter Van Dyck, delves into the ordinary; transforming bathroom interiors, studio window-sills, and two-car garages into creatively observed environments. What sets Van Dyck apart is his ability to transcend the mundane. He deftly manipulates the Cartesian plane, skewing the x and y axes to craft a perspective that's as expressive as it is unconventional. **Ongoing** - Featuring works in a variety of mediums by regional, national and international artists. Hours: Sun.-Tue., 11am-5pm & Wed.-Sat., 11am-6pm. Contact: 828/251-0202 or at ([www.bluespiral.com](http://www.bluespiral.com)).

**Castell Photography**, 2C Wilson Alley off Eagle St., Asheville. **Ongoing** - The gallery is owned by internationally recognized artist Brie Castell, is a unique photographic Salon & Gallery dedicated solely to photo based media. The gallery features the work of Brie Castell, and also hosts several rotating exhibitions each year of other talented photographers. Hours: Wed.-Fri., noon-6pm, Sat., noon-7pm or by appt. Contact: 828.255.1188 or at ([www.castell-photography.com](http://www.castell-photography.com)).

**Chatsworth Art and Antiques**, 54 N. Lexington Ave., Asheville. **Ongoing** - Specializing in 19th and early 20th century oils, watercolors and prints. Also jewelry, silver, china, small furniture and fine accessories. Hours: Tue.-Sat., 11am-5pm. Contact: 828.252.6004.



Work by Cindy Walton

**Cindy Walton Fine Art @ Pink Dog Creative**, 348 Depot Street, in the River Arts District, Asheville. **Ongoing** - Featuring works by Cindy Walton. Hours: Fri. & Sat., 11am-5pm or by chance. Contact: visit ([www.cindywalton.com](http://www.cindywalton.com)).

**Citron Gallery**, 60 Biltmore Avenue, Asheville. **Ongoing** - Featuring works from a variety of artists collected locally, nationally and internationally. Citron Gallery is a studio and gallery experience. View authentic works of art with the opportunity to meet the artists. Citron Gallery is a collaboration between Rand and Melinda Kramer and Frances Domingues. Each is a successful artist and all have been part of the vibrant art community for many years in Asheville. We look forward to your visit. Hours: Tue.- Sat., 11am-5pm and Mon. by appt. Contact: 828/785-4131 or at (<https://www.citrongallery.com/>).

**Clayspace Co-op**, River Arts District, 119A Roberts St., Asheville. **Ongoing** - The Clayspace Co-op is a cooperative ceramics studio and showroom located in the historic river arts district of Asheville, North Carolina. The main aim of the Clayspace Cooperative is to provide an environment that promotes the artistic growth and success of its members through cooperation and education. Hours: hours by chance. Contact: 828/279-3811.

**Cold River Gallery**, 32-A Biltmore Ave., Asheville. **Ongoing** - Welcome to the artistic expression of messages found in ancient wisdom, philosophies and our Earth's gifts, presented as the fine art of Karen Pierre. Working studio, jewelry, pottery. Hours: Tue.-Sat., noon-5pm. Contact: 828/350-0955.

**Corey C. McNabb Studio**, River Arts District, 1 Roberts Street, Suite 201, above White Duck Taco Shop, Asheville. **Ongoing** - An Asheville native, McNabb paints only with a palette knife, applying oils or acrylics to canvas, creating bold bright images with an impressionistic impasto style. Hours: Thur.-Tue., 11am-5pm. Contact: at ([www.mcnaabffineart.com](http://www.mcnaabffineart.com)).

**CURVE studios & garden**, 6, 9 & 12 Riverside Dr., River Arts District, Asheville. **Ongoing** - Working studios of Constance Williams, Sutherland Handweaving, Patti Torno, Maria Troya, Kyle Carpenter, Akira Satake, Cynthia Wynn, Fran Welch, Jenny Mastin, Cassie Ryalls & more. Hours: 11am-4pm daily. Contact: 828/388-3526 or at ([www.CURVEstudiosNC.com](http://www.CURVEstudiosNC.com)).

**Desert Moon Designs Studios & Gallery**, 372 Depot Street, Suite 44, River Arts District, Asheville. **Ongoing** - The gallery is a progressive contemporary gallery that includes working studios. The focus of the gallery is to showcase both emerging/established local and visiting regional artists. Several times a year special exhibitions are scheduled to introduce new talent or to bring focus to a certain art medium. Hours: Mon.-Sat., 11am-5pm. Contact: 828/575-2227 or at (<http://www.desertmoondesigns-studios.com>).

**FW Gallery at Woolworth Walk**, 25 Haywood St., Asheville. **Ongoing** - Woolworth Walk is a uniquely Asheville experience; a privately and locally owned gallery in the heart of downtown, located in a historic building and representing local artists exclusively, it is without a doubt "Worth the Walk". Hours: Mon.-Thur., 11am-6pm; Fri., 11am-7pm; Sat., 10am-7pm; & Sun., 11am-5pm. Contact: 828/254-9234 or at ([www.woolworthwalk.com](http://www.woolworthwalk.com)).

**Gallery COR**, 19 Biltmore Avenue, Asheville. **Ongoing** - Featuring works by Leslie Rowland, Frances Domingues, Meryl Lefkovich, and Stephen Quinn. Hours: Mon.-Sat., 11am-5pm & Sun., noon-4pm. Contact: 760/855-8663.

**Gallery Minerva Fine Art**, 8 Biltmore Ave., Asheville. **Ongoing** - Featuring painting, sculpture, photography, ceramics and glass by local and regional artists. Hours: Mon.-Thur., 11am-6pm; Fri. & Sat., 11am-8pm; & Sun., noon-5pm. Contact: 828/255-8850 or at ([www.galleryminerva.com](http://www.galleryminerva.com)).

**Gallery of the Mountains**, Inside The Omni Grove Park Inn, 290 Macon Ave., Asheville. **Ongoing** - Showcasing American handmade crafts by more than 100 artists and craftspeople from the Southern Appalachian region. Wed.-Sun., 10am-5pm. Contact: 828/254-2068.

**Groveswood Gallery**, adjacent to The Omni Grove Park Inn, 111 Groveswood Road, Asheville. **Ongoing** - Established in 1992, Groveswood Gallery is nationally recognized for its dedication to fine American-made art and craft. Located in historic Groveswood Village, this site once housed the weaving and woodworking operations of Biltmore Industries, an Arts and Crafts enterprise that played a significant role in the Appalachian Craft Revival during the early 20th century. Today, Groveswood Gallery offers two expansive floors of finely crafted furniture, ceramics, jewelry and more, contributed by over 400 artists and craftspeople from across the United States. Hours: Mon. - Sat., 10am-5:30pm & Sun. 11am to 5pm. Contact: 828/253-7651 or at ([www.groveswood.com](http://www.groveswood.com)).

**Ignite Jewelry Studios**, second story of Riverview Station, 191 Lyman St, #262, Asheville. **Ongoing** - Ignite Jewelry Studios, a project co-founded by local jewelers Jessica Hall, owner of Bluebird Designs, and Nora McMullen, owner of Nora Julia. Ignite Jewelry Studios has a fully-stocked shared space for experienced jewelers to use the equipment, create together and grow their skills. Weekly jewelry workshops are taught covering a variety of jewelry techniques for all skill levels. Gallery Hours: Tue.-Sat., 11-4pm. Contact: 828/552-4805 or at ([www.ignitejewelrystudios.com](http://www.ignitejewelrystudios.com)).

**Jewels That Dance: Jewelry Design**, 63 Haywood St., next door to the Library, Asheville. **Ongoing** - Featuring hand-crafted jewelry by some of America's foremost jewelry artists. Hours: Mon.-Sat., 10:30am-6pm. Contact: 828/254-5088 or at ([www.jewelsthatdance.com](http://www.jewelsthatdance.com)).

**Jonas Gerard Fine Art**, 240 Clingman Ave., Asheville. **Ongoing** - Featuring works by nationally known artist Jonas Gerard (1941-2020). The 5,000 square foot studio / gallery is filled with years of passion and dedication. He

used bold, passionate, sweeping gestures of saturated color that form unexpected images of poetic stature. Hours: Mon.-Sun., 10am-6pm & by appt. Contact: 828/350-7711 or at ([www.jonasgerard.com](http://www.jonasgerard.com)).

**K2 Studio**, 59 College Street, inside The Kress Building, Asheville. **Ongoing** - Featuring a unique collection of fine furniture by local artists and pieces from around the world, home accessories and changing fine art exhibitions. Hours: Mon.-Thur., 11am-6pm; Fri. & Sat., 11am-7pm; and Sun., noon-5pm. Contact: 828/250-0500 or at ([www.k2furniture.com](http://www.k2furniture.com)).

**Kress Emporium**, 19 Patton Ave., Patton & Lexington Aves., downtown Asheville. **Ongoing** - Featuring works by over 100 artists and craftsmen. Hours: Mon.-Sat., 11am-6pm & Sun., noon-6pm. Contact: 828/281-2252 or at ([www.thekressemporium.com](http://www.thekressemporium.com)).

**Local Cloth**, 408 Depot Street, River Arts District, Asheville. **Dec. 9, from 10am-4pm** - "Local Cloth Holiday Market". The Holiday Market is the perfect place to complete your holiday shopping list. Featuring handmade gifts, accessories, clothing and art, there will be more than a dozen vendors inside and outside of Local Cloth! And you can meet an alpaca! This free event is open to everyone — bring your friends and family! Contact: (<https://localcloth.org/>).

**Mark Bettis Downtown Gallery**, 15 Broadway Street, Asheville. **Ongoing** - Featuring works by Mark Bettis, Deb Williams, Asher Zev Holman, Nabil El Jaouhari, David Sheldon, GrantPenny, Cason Rankin, Samantha Edmiston, Balsam Abo Zour, and Tess Darling. Hours: Mon.-Thur., 11am-5pm; Fri.-Sat., 11am-6pm; & Sun. by appt. Contact: Mark Bettis at 941/587-9502 or e-mail to ([markdbettis@gmail.com](mailto:markdbettis@gmail.com)).

**Mark Bettis Studio & Gallery**, 123 Roberts Street, in the Wedge Studios Building, Asheville. **Through Dec. 16** - "2nd Annual Holiday Collectors Ornament Show". Last year was so popular we decided to invite the whole WEDGE Studios Building to take part in it! Mark Bettis Gallery will have six of their own artists participating, as well as many of the artists in Wedge Studios. The Ornaments will be on sale through Dec. 16, or until they are all sold out (whichever comes first). **Ongoing** - Featuring works by Mark Bettis, Deb Williams, Asher Zev Holman, Nabil El Jaouhari, David Sheldon, GrantPenny, Cason Rankin, Samantha Edmiston, Balsam Abo Zour, and Tess Darling. Hours: Mon.-Sat., 10am-5pm. Contact: Mark Bettis at 941/587-9502 or e-mail to ([markdbettis@gmail.com](mailto:markdbettis@gmail.com)).

**Marquee on Foundry Street in the RAD, Dec. 3** - "Imagine Pyramid," featuring an installation by Dee and Bruce Santorini. A reception will be held on Dec. 3, from 1-4pm. The Imagine Pyramid started with a song. That song, "Imagine" by John Lennon, is all about everything we stand for and believe in. Peace. Love. A world without hatred and war. In this world of conflict and pain, the Santorini's are compelled to produce art that sings with hope—the beauty of the Earth, the possibilities of humanity and all creatures—these are at the core of the art they produce. And what greater inspiration than the peace and love vibrating through John Lennon's song, "Imagine"?

**Momentum Gallery**, 24 N. Lexington Ave., Asheville. **Ongoing** - located in downtown Asheville, offers a contemporary and modern program with an emphasis on emerging and mid-career artists. Occupying approximately 4000 square feet in an easily accessible, street-level space, the gallery's mission is to provide compelling, museum-quality art to our clients. Curated exhibitions featuring exceptional paintings, original prints, and innovative sculpture refresh regularly in the main spaces and smaller adjoining galleries. Momentum Gallery also participates in major art fairs exhibiting work by represented artists. Hours: Mon.-Sat., 10am-6pm & Sun. noon-5pm. Contact: 828/505-8550 or at ([momentumgallery.com](http://momentumgallery.com)).

**Montford Arts Center**, 235 Montford Avenue, Asheville. **Ongoing** - Featuring works in a variety of media by over twenty-five area artists. Watch artists at work. Hours: Tue.-Fri., 11:30am-6pm & Sat., 11:30am-5pm. Contact: 828/777-1014.

**Mountain Made**, Grove Arcade Public Market, 1 Page Ave., Suite 123, Asheville. **Ongoing** - Featuring the work of over a 150 WNC artisans, in both contemporary and traditional mountain handcrafts. This one-of-a-kind, gallery and gift shop caters to those shoppers who wish to take a "piece of the mountains" home with them. Hours: Mon.-Sat., 10am-6pm & Sun., noon-5pm. Contact: 828/350-0307 or at ([www.mtnmade.com](http://www.mtnmade.com)).

**Mudhunter Pottery**, 66 Broadway St., Asheville. **Ongoing** - Featuring a rustic gallery shop showcasing functional and sculptural work from over 20 local potters. Our artists' diverse

styles and affordable prices set them apart. Hours: Tue.-Thur., 11am-5:30pm & Fri. & Sat., 11am-6pm. Contact: 828/225-5869.

**New Morning Gallery**, 7 Boston Way, Historic Biltmore Village, Asheville. **Ongoing** - Featuring fine art and crafts by some of America's finest artists. Hours: Mon.-Thur., 10am-6pm; Fri. & Sat., 10am-7pm. Contact: 828/274-2831 or at ([www.newmoringgallerync.com](http://www.newmoringgallerync.com)).

**Overström Studio**, 35 Wall St., Asheville. **Ongoing** - This architecturally significant gallery exclusively represents work by internationally-recognized designer Michael Overström, who with his wife Susan, present their original, handformed jewelry designs that embrace the designer's Scandinavian heritage and define Asheville's elegant style. Hours: Tue.-Sat., 10am-8pm. Contact: 828/258-1761 or at ([www.overstrom.com](http://www.overstrom.com)).



Work by Amanda McLenon

**Pink Dog Creative Gallery**, 348 Depot Street, in the River Arts District, Asheville. **Through Dec. 3** - "InHer Visions," featuring works by Janice Geller. The exhibit is an intimate glimpse into artist Janice Geller's inner world of dreams and awakenings of the unconscious. The show revolves around the processes she uses to create her paintings — creating art after exploring vivid dreams, inner meditations, authentic movement, active imagination, inner body states or the sumptuous allure of nature. At the exhibition visitors are invited to engage in interactive explorations of these themes and artworks. **Dec. 8 - Feb. 3, 2024** - "The Colors of Pink," a collaborative show about the creative studio's unusual name. Each artist will present artwork that explores and represents the role of color in their work. A reception will be held on Dec. 9, from 5-7pm. Artists in this exhibit include Karen Keil Brown, Christie Calaycay, Heather Divoky, Julieta Fumberg, Pam Granger Gale, Aaron Hill, Liz Hozier, Amanda McLenon, Joseph Pearson, Pat Phillips, Viola Spells, Sarah St. Laurent, Larry Turner, Christine VanCott, Cindy Walton, Emelie Weber Wade, Maya White, and Andrea Kulish Wilhelm. Hours: Fri. & Sat., 11am-5pm or by chance. Contact: 828/776-3034 or at ([www.pinkdog-creative.com](http://www.pinkdog-creative.com)).

**Pura Vida**, 39-B Biltmore Ave., Asheville. **Ongoing** - Featuring a space for the senses, offering the finest in artwork appealing to all five senses. Hours: daily noon-10pm. Contact: 828/271-6997 or at ([www.pura-vida-asheville.com](http://www.pura-vida-asheville.com)).

**Revolve Gallery**, 821 Riverside Dr #179, Asheville. **Ongoing** - Revolve is a contemporary art space that functions as part gallery, part studio, part performance and gathering space. Hours: daily 11am-7pm. Contact: 240/298-9575 or at ([revolveavl.org](http://revolveavl.org)).

**16 Patton Fine Art Gallery**, 16 Patton Avenue, Asheville. **Ongoing** - Featuring works by William McCullough, Deborah Squier, John MacKah, Greg Osterhaus, Jerry La Point, Richard Oversmith, Scott Lowery, Dawn Rentz, Laura Young, Margaret Dyer, Suzy Schultz and Stuart Roper. Studio glass by Herman Leonhardt. Hours: Mon.-Sat., 10am-6pm. Contact: 828/236-2889.

**Sky + Ground Contemporary Art**, Riverview Station, #256, 191 Lyman Street, Asheville. **Ongoing** - Featuring works by Peter Roux, Deanna Chilian, Christopher Peterson, Colleen Lineberry, and Karen Philippi. Hours: call ahead for hours. Contact: 617/947-4869 or at (<http://skygroundart.net>).

**Studio B Custom Framing & Fine Art**, Reynolds Village (near the Woodfin YMCA) 61 N. Merrimon Ave., Suite 109, Asheville. **Ongoing** - Browse our new gallery featuring works by national and international artists, including paintings, prints & posters, jewelry, ceramics, wood and textiles. Also offering custom framing. Hours: Tue.-Fri., 10am-5:30pm & Sat., 10am-3pm. Contact: 828/225-5200 or at ([www.galleryatstudiob.com](http://www.galleryatstudiob.com)).

continued on Page 55