

Some Exhibits Still on View

continued from Page 28

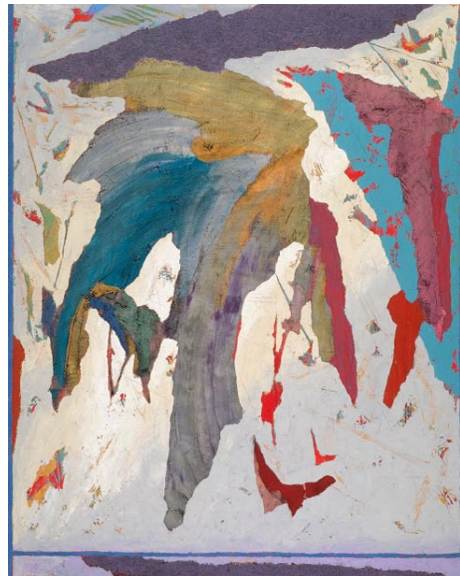
that celebrates four of the artist's books, including his iconic Jazz portfolio, on view through Jan. 15, 2018. Drawn from the Bank of America art collection, the exhibition features 80 framed illustrations that together offer meditations on life, love, hardship, and utter joy. "Henri Matisse is one of the essential European artists of the modern era," says Lynn Robertson, CMA interim director. "As South Carolina's only international art museum, we are thrilled to partner with Bank of America to give our community the chance to see the artist in one of his most personal and experimental genres." For further information call the Museum at 803/799-2810 or visit (www.columbiamuseum.org).



Jonathan Green, "Folding Sheets", 1989, permanent collection of the Harvey B. Gantt Center for African-American Arts + Culture

The Harvey B. Gantt Center for African-American Arts + Culture in Charlotte, NC, located at the Levine Center for the Arts is presenting *Instill & Inspire: Selections from the John & Vivian Hewitt Collection of African-American Art*, on view through Jan. 22, 2018. For over a 50-year period, John and Vivian Hewitt visited galleries, artists' studios and exhibitions, collecting hundreds of paintings, etchings and sketches. The John & Vivian Hewitt Collection of African-American Art is an assemblage of fifty-eight two-dimensional works celebrating the expression and passion of twenty artists, including Charlotte-born Romare Bearden and other master artists, Margaret Burroughs, Jonathan Green, Jacob Law-

rence, Elizabeth Catlett, Ann Tanksley and Henry Ossawa Tanner. For further information call the Center at 704/547-3700 or visit (www.ganttcenter.org).



Work by Herb Jackson

NC State University in Raleigh, NC, is presenting *A Door is not a Window*, featuring paintings by Herb Jackson, on view at Gregg Museum of Art & Design, The Historic Chancellor's Residence, through Jan. 28, 2018. This presentation features major abstract works from the past two decades by Raleigh native Herb Jackson, one of North Carolina's premier contemporary artists. The exhibition employs special lighting made possible by support from Wells Fargo. Jackson was born in Raleigh, NC, in 1945. He cannot recall a time when he was not busy painting and drawing, but remembers beginning to sell his artwork by the time he was ten or eleven. In 1962, he won first place in the *North Carolina Artists Exhibition*, an annual juried show for state residents sponsored by the North Carolina Museum of Art. For further information call Zoe Starling, Curator of Education at 919/513-7244 or visit (<https://gregg.arts.ncsu.edu/>).

SC Institutional Galleries

Allendale

Salkehatchie Arts Center, 939 N. Main St., Allendale. **Ongoing** - Featuring a retail store offering works by artists from the Salkehatchie region including Allendale, Bamberg, Barnwell, Colleton, and Hampton Counties. Hours: Tue.-Sat., 10am-5pm. Contact: 803/584-6084.

Anderson

Bay3 Artisan Gallery, located in the Arts Warehouse, 110 Federal St., Anderson. **Ongoing** - Featuring works by Marion Carroll, Carol Cook, Joshua Davis, Lynn Felts, Jane Friedman, Cheryl Gibisch, Ann Heard, Ruth Hopkins, Diann Simms and Lori Solymosi. The work presented in the gallery features oils, acrylics, watercolors, photography, pastels, collage, assemblages, sculpture, mosaics, and stained glass and jewelry. There is a piece of original art for every home or office in a variety of price ranges. Co-sponsored by the Anderson Arts Center. Hours: Tue.-Fri., 10am-4pm, & Sat., 10am-1pm. Contact: 864/716-3838 or at (www.andersonartscenter.org).

Beaufort Area

Gallery @ ARTworks, home of the Arts Council of Beaufort, Port Royal, & Sea Islands, 2127 Boundary St., near K-Mart, in Beaufort Town Center, Beaufort. **Ongoing** - Featuring the work and creative processes of new and emerging artists. Hours: Mon.-Fri., 10am-5pm. Contact: 843-379-2787 or at (www.beaufortcountyarts.com).

Beaufort Art Association Gallery, 913 Bay Street, across the street from the Clock Tower, Beaufort. **Ongoing** - New works by more than 90 exhibiting members of the Beaufort Art Association Gallery - exhibits and featured artists change every six weeks. In addition to framed paintings in a variety of media, the gallery offers prints, photographs, unframed matted originals, jewelry, sculpture, ceramics and greeting cards. Hours:

Mon.-Fri., 10 am-5pm. Contact: 843/521-4444 or at (www.beaufortartassociation.com).

Bluffton



Work by Larry Hughes

Society of Bluffton Artists Gallery/Learning Center, 8 Church Street, corner of Calhoun and Church Street, Bluffton. **Through Dec. 3** - "12 x 12". This show also serves as an important fundraiser for SoBA. The artists traditionally share a large portion of their commission with the gallery from this exhibition. **Through Dec. 10** - "Lowcountry Elements: A Natural Study," featuring works by Elizabeth Slater. The exhibit includes works of pencil, watercolor and acrylic adaptations of the coastal elements beloved to the Lowcountry. **Dec. 11 - 31** - "Small, Medium(s), and Large," featuring works by Larry Hughes. A reception will be held on Dec. 15, from 5-7pm. His show will be an exhibit consisting of group works to include Ab-Originals, Southwest Suite, and Cave and Rock Art. **Center for Creative Arts building next door, Through Dec. 22** - "Fifth Annual Holiday Boutique". The boutique offers the community a unique place to shop for the holidays from local artists with a variety of creative items to choose from — including jewelry, cards, holiday decorations, small paintings, floral arrangements and fiber art. Prices range from \$15 to \$350. **Ongoing** - Featuring works in a variety of mediums by over 100 area artists, with all work moderately priced. Changing shows

every six weeks. Hours: Mon.-Sat., 10am-5pm & Sun., 11:30am-3pm. Contact: 843/757-6586 or at (www.sobagallery.com).

Camden

ALTERNATE ART SPACES - Camden Douglas-Reed House, at the Fine Arts Center of Kershaw County, 810 Lytleton Street, Camden. **Dec. 1 - 13** - The annual Holiday Sales Show. This unique holiday shopping experience has become a Camden tradition. This year, nearly 40 vendors will have fabulous, one-of-a-kind, handmade items for everyone on your list. Set in the FAC's historic Douglas-Reed House (ca. 1812) the show will feature a selection of fine, handmade pieces in clay, glass, metals, and wood. Some of the items you will find include pottery, hand-blown glass, aprons, woodwork, soaps, candles, specialty teas, and coffees, dog treats, herbed jams and syrups, candies and dips, jewelry, stuffed toys, ornaments, wall art, stained glass and so much more! Local potter and pottery instructor Debra Gregory will act as curator again this year. Regular shopping hours are 10:30am-6pm, Mon.-Sat. and 1:30-6pm on Sunday. Contact: 803/425-7676, ext. 300, or at (www.fineartscenter.org).

Charleston

Avery Research Center for African History and Culture, at the College of Charleston, 125 Bull St., Charleston. **Denmark Vesey Conference Room, Ongoing** - "KABOH: A Legacy of Twelve." Charleston Quilter Dorothy Montgomery made "KABOH" in honor of the "Priscilla" story. The quilt was in the possession of Dr. Joseph Opala who donated it to the Avery Research Center in July, 2008. **Corridor (2nd Floor), Ongoing** - "Esau Jenkins: A Retrospective View of the Man and His Times" This exhibition was developed in 1991 by the Avery Institute. After its display in Charleston it traveled throughout the state of SC under the auspices of the State Museum Traveling Exhibition Program. Consisting of (15) panels measuring 24" x 36", the exhibit chronicles the myriad of activities Mr. Jenkins was intimately involved in. Additionally, it highlights his leadership skills as a conscious and compassionate community activist, organizer, entrepreneur and Civil Rights leader. Hours: Mon.-Fri., 10am-5pm & Sat., noon-5pm. Admission: by donation. Contact: 843/953-7609 or visit (www.cofc.edu/avery).

Charleston Artist Guild Gallery, 160 East Bay St., Charleston. **Ongoing** - Featuring an exhibit of works by over 80 plus members of CAG who display a wealth of talent in different media including oils, acrylics, pastels, watercolors, photography, printmaking & sculpture. The Gallery is also home for the CAG office. Hours: Daily, 11am-6pm. Contact: 843/722-2454 or at (www.charlestonartistguild.com).

City Gallery at Joseph P. Riley, Jr. Waterfront Park, 34 Prioleau Street, Charleston. **Through Dec. 18** - "Posing Possibilities: Drawing Inspiration from and for Charleston's Parks". This celebration of the beauty of Charleston's public spaces features the work of Jack Alterman, Janie Ball, Christophe Drumain, Karyn Healey, Alan Jackson, Hirona Matsuda, and Fletcher Williams III. An artists' talk with the exhibiting artists will be held on Dec. 9 at 2pm. Both events are free and open to the public. The exhibit celebrates the promise of public parks and the people who nurture those spaces in a collaboration between multiple artists and the Charleston Parks Conservancy. Hours: Tue.-Fri., 10am-6pm & Sat.-Sun., noon-5pm. Contact: 843/958-6484 or (<http://city-galleryatwaterfrontpark.com/>).

Gibbes Museum of Art, 135 Meeting Street, Charleston. **Gallery 2, Through May 20, 2018** - "Mexico and the Charleston Renaissance". This exhibition explores the influence of Mexican art and culture upon American artists in the mid twentieth century, particularly artists associated with the Charleston Renaissance. Mexico and the Charleston Renaissance features paintings and works on paper from the Gibbes Collection by William Halsey, Anna Heyward Taylor, George Biddle, Charles Wilbert White, Edward Middleton Manigault and Corrie McCallum. **Gallery 3, Through May 20, 2018** - "Magic in the Mundane: Modernist Photography from the Robert Marks Collection". Influenced by surrealism and other modernist art movements, early twentieth-century photographers expanded the traditional boundaries of the camera radically altering perceptions of everyday subjects. This exhibition features works by Alfred Stieglitz, Berenice Abbott, Laszlo Moholy-Nagy, Martin Munkácsi, and George Platt Lynes, from the Robert Marks Collection at the Gibbes. **Galleries 8 & 9, Through Jan. 7, 2018** - "Pan American Modernism: Avant-Garde Art in Latin America and the United States". This exhibit explores the rich visual dialogue that flourished across the Americas between 1919 and 1979. Showcasing more than 70 important works of art, the exhibition examines Modernism as an international phenomenon, embracing the contributions of Latin American artists. **2nd Floor Atrium, Through Mar. 24, 2018** - "Betwixt

and Between". Sculptor Patrick Dougherty works with twigs and branches to create site-specific installations. Woven together and held in place by tension, Dougherty's sculptures have a whimsical quality, inspired by his childhood adventures exploring the woods of North Carolina. At the Gibbes, Dougherty has created an installation titled "Betwixt and Between" in the museum's glass atrium, creating a visual connection between the interior gallery space and the lush outdoor garden. **Museum Shop** - Now offering the inventory of the Tradd Street Press, reproductions of works by Elizabeth O'Neill Verner among other exhibit related art objects. Hours: Tue.-Sat., 10am-5pm & Sun., 1-5pm; closed Mon. Admission: Yes. Contact: 843/722-2706 or at (www.gibbesmuseum.org).

Halsey Institute of Contemporary Art, The Marion and Wayland H. Cato Jr. Center for the Arts, College of Charleston School of the Arts, 161 Calhoun St., Charleston. **Through Dec. 7** - "SEA CHANGE," is a series of exhibitions and programs presented in collaboration with the South Carolina Aquarium to raise awareness of our enormous plastic waste problem and the detrimental effects on our planet including: "CHRIS JORDAN: MIDWAY," Jordan's photographs depict the magnitude of our consumerism and its impact on our environment and "AURORA ROBSON: THE TIDE IS HIGH". Robson creates lively and intricate sculptures from plastic debris, transforming everyday waste into aesthetic objects of beauty and reflection. Hours: Mon.-Sat., 11am-4pm and open till 7pm on Thurs. Contact: Mark Sloan at 843/953-4422 or at (www.halsey.cofc.edu).

Saul Alexander Foundation Gallery, Charleston County Public Library, 68 Calhoun St., Charleston. **Dec. 1 - 31** - "Lowcountry Abstract," featuring works by Lisa Van Raalte. The exhibit is an autobiographical collection of contemporary abstract art. "I have been fortunate to call the Lowcountry my home for over twenty years. I often interject myself into my paintings, which are heavily influenced by the geography of the Lowcountry. Hours: Mon.-Thur., 9am-8pm; Fri. & Sat., 9am-6pm; and Sun. 2-5pm. Contact: Frances Richardson at 843/805-6803 or at (www.ccpl.org).



Look inside the old Charleston Museum

The Charleston Museum, 360 Meeting Street, Charleston. Founded in 1773, is America's first museum. **Charleston Museum's Lowcountry Image Gallery, Through May 14** - "The Early Days: A Photographic History of America's First Museum," tells the story of the Museum's transformation over the years. After The Charleston Museum's founding in 1773 by the Charleston Library Society, it was subsequently overseen by the Library Society, the Literary and Philosophical Society of South Carolina, the Medical College of South Carolina, and the College of Charleston. In 1907, Charleston's city council offered the newly built Thomson Auditorium on Rutledge Avenue to house the Museum and provided funding to support the growing institution. Over the years, Museum directors continued the expansion of exhibits and educational programs and fashioned the Museum into a much loved cultural institution in the Charleston community. By the 1970s, the grand building that housed the Museum had fallen into serious disrepair and the welfare of the collections was threatened. Under the directorship of Donald Herold, the collections were moved to the new location at 360 Meeting Street, and the Museum opened once again to the community in April 1980. Unfortunately, in October of 1981, a fire destroyed the old building leaving only the portico with four columns as a remembrance. **Textile Gallery, Through May 31** - "Piece by Piece: Geometric Quilts," the second installment of the exhibition, will consist of quilts with geometric designs. Different shapes and piecing techniques have traditionally been mainstays of the quilting craft. From magnificent stars to traditional nine-patch, these quilts will also include clever hexagons of English paper-template piecing along with Log Cabins, Flying Geese, Chimney Sweeps and even a few Crazy Quilts. **Ongoing** - Featuring the most extensive collection of South Carolina cultural and scientific collections in the nation, it also owns two National Historic Landmark houses, the Heyward-Washington House (1772) and the Joseph Manigault House (1803), as well as the Dill Sanctuary, a 580-acre wildlife preserve. Admission: Yes. Hours: Mon.-Sat., 9am-5pm & Sun., 1-5pm. Contact: 843/722-2996 or at (www.charlestonmuseum.org).

continued on Page 30