

SC Institutional Galleries

continued from Page 40

Indian pottery, the NAS Center will offer exhibits of regional Native American Art, classes and programs focused on Native American history, culture, archaeology, folklore, and language. Hours: Tue.-Wed., 10am-5pm; Thur., 10am-7pm; Fri.-Sat., 10am-5pm; Sun., 1-5pm; and Mon. by appt. Contact: 803/313-7172 or visit (<http://us-clancaster.sc.edu/NAS/>).

Laurens

The Artist's Coop, 113 E.Laurens St., on the Historic Downtown Square., Laurens. **Ongoing** - Featuring works by over 50 cooperative members, including paintings, jewelry, pottery and weavings. Also art classes for children and adults. Hours: Tue.-Fri., 10am-5:30pm & Sat., 10am-3pm. Contact: 864/984-9359 or at (www.laurensartistscoop.org).

Lexington

ALTERNATE ART SPACES - Lexington **Lexington County Administration Building**, throughout the 1st - 6th floors, 212 South Lake Drive, Lexington. **Through Jan. 31, 2014** - "SCA semi-annual Lexington County Administration Building/LCAB exhibit". Features over 50 works of contemporary visual art by artists Ann Cimburke, Gretchen Evans Parker, Ann Rankin, Linda Johnson, Renea Eshleman, Vi Horton, Abstract Alexandra, Pamela G. Walker, Ellin Baskin. SCA is a not for profit group dedicated to providing public exhibits & professional support for SC artists. Free and open to the public. Hours: Mon.-Fri., 8am-5pm. Contact: 803/808-5328 or at (<http://www.lex-co.com/>) or (www.southcarolinartists.com).

McCormick

The MACK, McCormick Arts Council Gallery, 115 Main Street, located in the historic Keturah Hotel, McCormick. **Ongoing, The Artisans Gallery Shop at the MACK** - Featuring works of over 30 artisans including paintings, pottery, jewelry, jackets, gourds, woodworking, textiles, soaps and more. Hours: Mon.-Sat., 10am-4pm. Contact: 864/852-3216 or at (www.the-mack.org).

Mount Pleasant

Sweetgrass Cultural Arts Pavilion, Mount Pleasant Memorial Waterfront Park, 99 Harry M. Hallman, Jr. Blvd., under the bridge, Mount Pleasant. **Ongoing** - The pavilion is a tribute to the generations of men and women who have carried on this African tradition for more than three centuries. Kiosks and panels tell the history of this unique craft, and the open-air facility provides a venue for local basketmakers to display and sell their wares. Hours: daily, 9am-5pm. Contact: 800/774-0006 or at (www.townofmountpleasant.com).

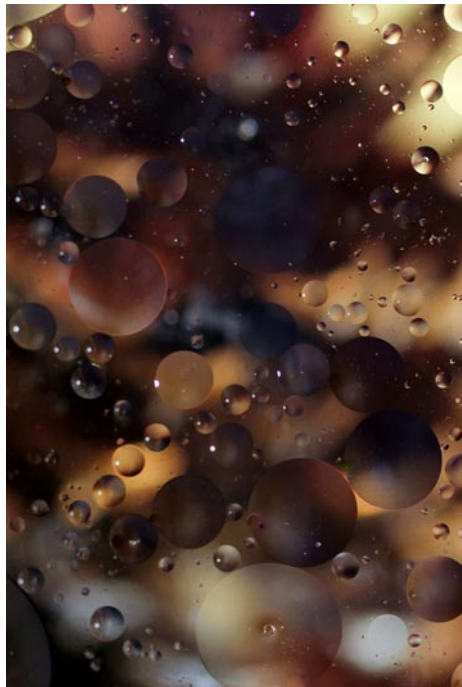
Myrtle Beach / Grand Strand



Work by Jon Riis

Franklin G. Burroughs • Simeon B. Chapin Art Museum, 3100 South Ocean Blvd., beside Springmaid Beach, Myrtle Beach. **Through Dec. 29** - "Passionate Collectors". Four years ago, the Franklin G. Burroughs-Simeon B. Chapin Art Museum received one of the largest and most significant gifts in its then-12-year history: the 53-piece collection of husband and wife Barbara Burgess and John Dinkelspiel. The collection included works in a wide range of styles, subjects and media all focused on Southern art. Represented in the collection are 21 pieces from South Carolinian Jonathan Green, along with works by noted African-American artists William H. Clarke, James Denmark, Cassandra Gillens and others. **Through Dec. 29** - "Celia Pearson: Glass Transformed, A Photographer Explores Sea Glass." Nationally known photographer Celia Pearson was commissioned to produce 150 images of the sea glass collection of Marylanders Richard and Nancy LaMotte - comprising some 30,000 pieces for their 2004 book "Pure Sea Glass". Since then these small treasures, including collections from Italy and Spain, have been an enduring inspiration for Pearson. **Through Jan. 5, 2014** - "The Opulent Object: Tapestries by Jon Riis with Sculpture by Richard Mafong and Mike Harrison". Throughout history, humans have coveted material things that are luxurious, rich

in color or texture, adorned with gemstones and other rare materials, and meticulously crafted: in short, opulent objects. More than 40 tapestries and 20 sculptures are featured in the exhibition. Hours: Tue.-Sat., 10am-4pm & Sun., 1-4pm. Contact: 843/238-2510 or at (www.myrtlebeachartmuseum.org).



Work by Sandi Blood

Seacoast Artists Gallery, at The Market Common, 3032 Nevers Street, Myrtle Beach. **Dec. 1 - 30** - Featuring works by award-winning photographer/artist Sandi Blood, who is Vice President of the Seacoast Artists Guild, and a member of Carolina Nature Photographers Association. You can find her artwork displayed at Seacoast Artists Gallery at The Market Common, Applewood House of Pancakes and Mercy Center Hospice. **Ongoing** - features the works of over 70 local artists of the Seacoast Artists Guild of South Carolina, a non profit visual arts organization dedicated to advancing excellence in the visual arts through teaching, exhibits, workshops and special events. Artwork includes oil, acrylic, and watercolor paintings; fiber art, mixed media, pottery, engraved metals, musical instrument art, and fine art photography. Guild membership benefits include monthly meetings; programs & presentations, opportunities to participate in Spring & Fall Art Shows and web gallery. Dec. Hours: Mon.-Thur., noon-8pm; Fri.-Sat., noon-9pm; Sun., noon-6pm. Contact: 843/232-7009, e-mail to (seacoastartistsgallery@gmail.com) or at (www.seacoastartistsguild.com).

Newberry

Wessels Library Gallery, Wessels Library, Newberry College, Newberry. **Through Jan. 31, 2014** - "Newberry Visual Arts Faculty Exhibition," featuring works by Marjorie Huwa, Bruce Nellsmith, and Paula Riddle. The show will include a variety of media, including paintings, prints, drawings, and pottery. Hours: Mon.-Thur., 7:30am-11pm; Fri., 7:30am-5pm; and Sun., 4-11pm. Contact: 803/321-5229.

North Charleston

City of North Charleston Art Gallery, North Charleston Performing Arts Center & Convention Center Complex, common walkways, 5001 Coliseum Drive, North Charleston. **Dec. 2 - 28** - "Inspired," featuring works by members of The Village Artists, a group of artists who paint together in the Old Village of Mt Pleasant, SC. A reception will be held on Dec. 5, from 5-7pm. The exhibition will feature diverse styles and media - representational, abstract, still-life, figurative studies and landscapes in watercolor, oils, pastels and acrylics. The Village Artists are Margaret Connell-de Ruyter, Jane Hart, Ann Marie McKay, Lorie Merryman, Ryoko Miller, Faye Sullivan and Ginny Versteegen. Hours: Mon.-Sat., 9am-5pm. Contact: 843/740-5854, or at (<http://bit.ly/culturalarts>).

The Meeting Place, Front Window, Olde North Charleston Business District, 1077 E. Montague Ave., North Charleston. **Through Dec. 31** - "Epiphany", featuring works by local artist Barbara Sawyer, including a collection of landscapes and seascapes inspired by living in the Lowcountry. Hours: daylight hours. Contact: 843/740-5854 or at (<http://bit.ly/culturalarts>).

ALTERNATE ART SPACES - North Charleston **Riverfront Park**, 1001 Everglades Dr., The Navy Yard at Noisette (former Charleston Naval Base), North Charleston. **Through Mar. 2014** - "8th Annual National Outdoor Sculpture Competition and Exhibition". The eleven month exhibition features nine established and emerging artists displaying

imaginative and thought provoking large-scale sculpture. Visitors can enjoy the sculpture displays among ten acres of walking paths, a fishing pier, boardwalk, playground, and children's play fountain. Organized and presented by the City of North Charleston Cultural Arts Department. Participating artists include: Jeff Brewer - Nacogdoches, TX; Anne Melanie - Greenville, NC; Gary Gresko - Oriental, NC; Adam Walls - Lauvinburg, NC; Bill Wood - Fairfax, VA; Davis Whitfield IV - Mountain City, TN; Paris Alexander - Raleigh, NC; Carl Billingsley - Ayden, NC; and John W. Parker - Glenside, PA. Hours: daylight hours. Contact: 843/740-5854 or at (<http://bit.ly/culturalarts>).

Orangeburg

Lusty Gallery, Orangeburg County Fine Arts Center, Edisto Memorial Gardens, 649 Riverside Drive, Orangeburg. **Ongoing** - Featuring a permanent display of works by Coan Culler, Pernille Lake, Betty Edmonds, Elsie Fogle, Michiko Johnston, Zita Mellon, Barbara Townsend, Isaiah Zagar, and local schoolchildren. Hours: Mon.-Thur., 8:30am-4:30pm & Fri., 8:30am-noon. Contact: Elizabeth Thomas at 803/536-4074.

Pawleys Island, Litchfield & Murrells Inlet



Poinsettia Tree

Brookgreen Gardens, US 17, south of Murrells Inlet. **Dec. 5-7, 12-14, and 19-21, 2013, from 3-10pm** - "Nights of a Thousand Candles". Brookgreen comes to life with the glow of more than 5,500 hand-lit candles and countless sparkling lights. During the event, guests walk through the sculpture garden and view beautiful lighting displays. They will hear hand bells ringing, carolers singing and see candles drift quietly in the fountains. More than 50 acres of the gardens are open to the public. Adult tickets are \$16 and child tickets (ages 4-12) are \$7 and children age three and under are free. For discount prices on group reservations of 15 guests or more, please call 800/849-1931 or 843/235-6021. **Through Jan. 1, 2014** - "Holiday Exhibits". Brookgreen Gardens' two new indoor exhibits offer a bright beginning to the holiday season. Created by the horticulture staff and volunteers, "Signs of the Season in Flora and Fauna" displays beautiful and creative garden vignettes with poinsettia and bromeliad trees, wreaths, and natural materials and plants as "living art. This exhibit features some new and fresh ideas of how to decorate your home for the holidays. Curated by the Art and Historical Collections department, "Batteries Not Included: Christmas Trees, Trains, and Toys," showcases an extravaganza of finery including period trees, ornaments, and gifts, plus new Star Wars and Dr. Seuss-themed trees. "Plasticville, USA" returns with a display of erector sets (along with other moving objects) and Lionel, American Flyer, and Bachmann trains, as well as a special outdoor train display. Also featured will be the Huntington family and its important role in American history. **Ongoing** - "Lowcountry: Change and Continuity," a major new exhibit, tells the story of human interaction with this land over the centuries. It features wall size photomurals by SC naturalist photographer Tom Blagden, along with a range of artifacts tracing the history of man's occupation of this extraordinary landscape. **General Gardens, Ongoing** - One of the largest collections of outdoor sculpture in America. This preeminent collection of American representational sculpture includes - 560 works by 240 artists - representing such well-known artists as Charles Parks, Daniel Chester French, Carl Milles, August Saint-Gaudens and Anna Hyatt Huntington. Hours: daily, 9:30am-5pm Admission: Yes. Admission to Brookgreen is good for seven days. Contact: 843/235-6000, 800-849-1931, or at (www.brookgreen.org).

ALTERNATE ART SPACES - Litchfield **Gallery at Applewood House of Pancakes**, 14361 Ocean Highway, Litchfield Beach. **Ongoing** - features works of accomplished local artists and photographers who are members of the Seacoast Artists Guild of South Carolina dedicated to advancing excellence in the visual arts through teaching, exhibits, workshops, art shows & sales. Hours: daily 6am - 2pm. Contact: at (www.seacoastartistsguild.com).



Work by Patricia Kilburg

Pickens

Pickens County Art and Historical Museum, 307 Johnston Street, Pickens. **Dec. 7 - Feb. 6, 2014** - "Fire Dance: Encaustic and Mixed Media Work by Patricia Kilburg". A reception will be held on Dec. 7, from 6-8pm. A studio artist residing in Greenville, SC, Patricia Kilburg has exhibited throughout the United States, and internationally through the Art in the Embassies program. Her work has been featured in several publications, including "American Craft", "Sandlapper Magazine", and "Magazine of the American Folk Art Museum," NY. Her piece "Urban Mother and Child" was commissioned by the Women's Board of Rush/St. Luke's Hospital, Chicago, IL. She has exhibited at the Mint Museum of Craft and Design, Charlotte, NC, and South Carolina State Museum, Columbia, SC. **Dec. 7 - Feb. 6, 2014** - "A Dozen Dames: Twelve Women Making Art". A reception will be held on Dec. 7, from 6-8pm. "A Dozen Dames", is an invitational exhibition representing a range of artists dealing with a variety of techniques and subject matter. Included in this group are: Angelique Brickner, Linda Hyatt Cancel, Diana Farfan-Valente, Suzy Hart, Stephanie Howard, Randi Johns, Jo Carol Mitchell-Rogers, Beth Bullman Regula, Liz Rundorff Smith, B. J. Turner, Judy Z. Verhoeven and Susan Watson. Hours: Mon.-Fri., 9am-5pm; Thur. till 7:30pm & Sat., 9am-4:30pm. Contact: 864/898-5963 or at (www.co.pickens.sc.us/culturalcommission).

Richburg

Olde English District Visitors Center & Market, 3200 Commerce Drive, Suite A, Richburg. **Ongoing** - This is your one stop shop for finding specialty food products, art (pottery, jewelry, etc.) and many other local, unique items from our region. We also carry a variety of South Carolina souvenirs. Hours: daily, 9am-5pm. Contact: 803/385-6800 or at (www.oldeenglishmarket.com).

Ridge Spring

Art Association of Ridge Spring Gallery, Art Center in Ridge Spring, located behind the Ridge Spring Civic Center, 108 Maintenance Shop Circle, Ridge Spring. **Ongoing** - Featuring works in a variety of media by: Ron Buttler, Sammy Clark, Christie Dunbar, Donna Minor, Joanne Crouch, Gloria Grizzle, Donna Hatcher, Linda Lake, Samantha McClure, Danny O'Driscoll, Gwen Power, Deborah Reeves, Mary Rogers, Emily Short, Marion Webb, and Barbara Yon. Hours: Fri. & Sat., 10am-4pm or by appt. Contact: 803/685-5003, 803/685-5620 or at (<http://sites.google.com/site/artassnridgespring/Home>).

Rock Hill

Center for the Arts, 121 East Main St., Rock Hill. **Dalton Gallery, Through Dec. 29** - "Vernon Grant's Winter Frolic: Santas, Snow and Scenes of Winter". Renowned illustrator and creator of Kellogg's® Snap!® Crackle!® Pop!®, Vernon Grant built his reputation on his signature gnomes, jolly Santas and his whimsical approach to illustration. Along with Grant's favorite subject, Santa Claus, this year's ChristmasVille exhibit will feature skiers, snowmen and winter scenes that graced the covers of some of America's most popular magazines of the times. Hours: Mon.-Thur., 9am-6pm; Fri., 9am-5pm; and on 2nd and 4th weekends, Sat., 10am-2pm; & Sun., 2-4pm. Contact: 803/328-2787 or at (<http://www.yorkcountyarts.org/>).

Harry & Becca Dalton Gallery, Clinton Junior College, located in the atrium of the library in the back of the campus, 1026 Crawford Road, Rock Hill. **Through Dec. 6** - "Korogocho: Photography, Painting, & Mixed Media Work by Jim Stratakos". A reception will be held on Oct. 29, from 6:30-8pm. Award winning photo-journalist Jim Stratakos offers an intimate look at Korogocho, a massive slum in Nairobi, Kenya. Hours: Mon.-Thur., 9am-8pm & Fri., 9am-5pm. Contact: call Marie Cheek at 803/372-1102 or at (<http://www.clintonjunior-college.edu/daltongallery.html>).

continued on Page 42