

FINE
art@
BAXTERS
GALLERY



"Apex Nursery Relic: By Patricia Pittman"

323 Pollock Street • New Bern, NC 28560
Hours: Monday - Friday 10:00 am - 6:00 pm
Saturday 10:00 am - 5:00 pm • 252.634.9002
www.fineartatbaxters.com

FORMALLY NEW BERN ARTWORKS GALLERY

HAPPY HOLIDAYS
Wilmington Art Association

The Premier Visual Arts Organization
of the Cape Fear Coast

"Deck The Walls Show"

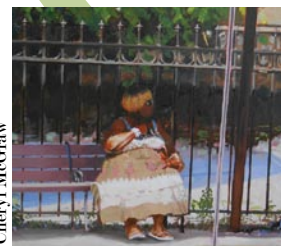
-Leadership Show -

Running through December

ACES Gallery

221 N. Front Street, Wilmington, NC

Special Exhibit Celebrating Art from
WAA Board of Directors and Committee Leaders



Cheryl McGraw



Elaine Cooper



Liz Hosier

Membership is open to artists & art lovers alike.

Now Accepting 2014 Committee & Board Volunteer Positions

Join Today & Support Local Art
www.wilmingtonart.org

Craving Art Studio in Beaufort, NC, Offers Works by Michael Rhinehardt

Craving Art Studio in Beaufort, NC, is presenting an exhibit of works by Michael Rhinehardt, on view through Dec. 31, 2013.

Rhinehardt, a native of Carteret County, is a true gift to the community - as an exceptional person, artist and teacher.

After graduating from ECU with a BFA in Art Education, Rhinehardt taught art in the down east elementary schools in Carteret County for many years and now teaches art at East Carteret High School. Rhinehardt explores many subjects in his contemporary paintings but is especially well known for his expressive depiction of the female figure.

The gallery is very excited to host Rhinehardt and his new paintings for this show and is also eager to introduce the public to the many offerings available to the community at Craving Art Studio.

The gallery would also like to thank the people and businesses of Beaufort for all of the kind support we have received.



Work by Michael Rhinehardt

To help us continue the cycle of community support, please consider bringing a canned good or non-perishable food item that will be donated to Loaves and Fishes for the holidays.

For further information check our NC Commercial Gallery listings, call the gallery at 252/728-0243 or at (www.craving-artstudio.com).

The Maria V. Howard Arts Center at the Imperial Centre in Rocky Mount, NC, Features Works by Keith Norval and Charles Schulz

The Maria V. Howard Arts Center at the Imperial Centre in downtown Rocky Mount, NC, is presenting *The Quilted Grid*, featuring works by Keith Norval, on view in the North Carolina Artists Gallery, through Jan. 5, 2014, and *Peanuts... Naturally*, featuring works by Charles Schulz, on view in the five upstairs galleries, through Jan. 5, 2014.

Norval was born and raised in Zimbabwe and spent much time in the bush around zebras, elephants, and antelopes,

with an occasional lion or hippopotamus. His Dad's work as an entomologist next took them to Kenya and Florida. Travel became a part of growing up as he often visited the Musee Dorsay in Paris and the Tate Gallery in London. Next stop for Norval was the Savannah College of Art & Design, immersing himself in painting and printmaking for his BFA degree.

Influences include the repeat patterns of Andy Warhol, expressionist painter Ed-

continued above on next column to the right

Sunset
River
marketplace
Fine Arts &
Crafts
of the
Carolinas

Brian Evans
*Vessels: Altered, Twisted &
Weathered*
Dec. 4, 2013 - Jan. 11, 2014

Please Join Us for a
Holiday Open House on
Sunday, Dec. 8, 1 - 4 p.m.

10283 Beach Drive SW
Calabash, NC 28467
910.575.5999
www.sunsetrivermarketplace.com



Volcanic Vessel by Brian Evans



Work by Keith Norval
vard Munch, Pablo Picasso's cubism, and the textural surfaces of Paul Cezanne and Paul Klee. Modern day playful influences include comic book artists B Kliban, Gary Larson, Charles Schulz and The Beano and The Dandy (British kids comics).

Norval now lives in Raleigh, NC, and works joyfully out of his studio at Artspace. His oil paintings and drawings
continued on Page 35



Light weight
recycled aluminum
jewelry
hand crafted in
North Carolina

CAROLINA
CREATIONS | 317 Pollock St
Downtown New Bern, NC
252-633-4369
Shop online carolinacreations.com