

You're  
Invited!

## Opening Reception

South Carolina  
Watermedia Society's  
2019 National  
Annual Exhibition



Saturday,  
November 9

4:30 pm - 6:30 pm

University Place Gallery  
142 North Dargan St.  
Florence SC 29506

## Business Meeting and Awards Presentation

2:00 pm - 4:00 pm  
Victors Restaurant

learn more at  
[scwatermedia.com](http://scwatermedia.com)

scws  
SOUTH CAROLINA WATERMEDIA SOCIETY

## Some Exhibits That Are Still On View

Our policy at *Carolina Arts* is to present a press release about an exhibit only once and then go on, but many major exhibits are on view for months. This is our effort to remind you of some of them.



Fahamu Pecou, "Egun Dance 1", 2016, graphite and acrylic on paper, framed with cowries, 60 x 48 in.

UNC-Chapel Hill in Chapel Hill, NC, is presenting *Fahamu Pecou's DO or DIE: Affect, Ritual, Resistance*, on view in the Robert and Sallie Brown Gallery of the Sonja Haynes Stone Center for Black Culture and History, from Sept. 19 through Nov. 21, 2019. Fahamu Pecou is an Atlanta-based visual artist and scholar whose works combine observations on hip-hop, fine art and popular culture. Pecou is profoundly involved in exploring the state of Black existence – life and death – in his work. In the midst of the endemic and pervasive threat of violence that is often a fact of life for young black men the artist asks, "Under looming threat of death, how might we inspire life? Through what mechanisms could we resist the psychological violence and despair inspired by

the threat of violence and usher in hope?" Or how might art serve as a "space of resistance?" This exhibition was organized at the Halsey Institute of Contemporary Art at the College of Charleston, Charleston, SC, in collaboration with the Michael C. Carlos Museum at Emory University, Atlanta, GA. For further information call the Center at 919/962-9001 or visit (<http://sonjahaynesstonectr.unc.edu/>).



Work by Rosalia Torres-Weiner

Queens University of Charlotte in Charlotte, NC, is presenting *ARTE LATINO NOW FALL 2019*, on view in the Max L. Jackson Gallery in the Watkins Building, through Nov. 24, 2019. Sponsored by The Center for Latino Studies at Queens University of Charlotte in partnership with Queens' Departments of Art and World Languages, Art Sí and artist Edwin Gil, *ARTE LATINO NOW FALL 2019* seeks to highlight the exciting cultural and artistic contributions of Latinos in the United States. We invite artists who self-define as Latino and live and work in the United States to submit an original creative work in their medium of choice. Categories considered include New Media, Visual Arts, Performing Arts (including dance, theater, and music) and Creative Writing. Queens has been pleased to support this event for the last nine years and is excited that entries have increasingly been submitted from across the United States. For further information e-mail Michele Shaul at ([shaulm@queens.edu](mailto:shaulm@queens.edu)).

The Florence County Museum in Flor-  
*continued above on next column to the right*



Work by Jim Boden

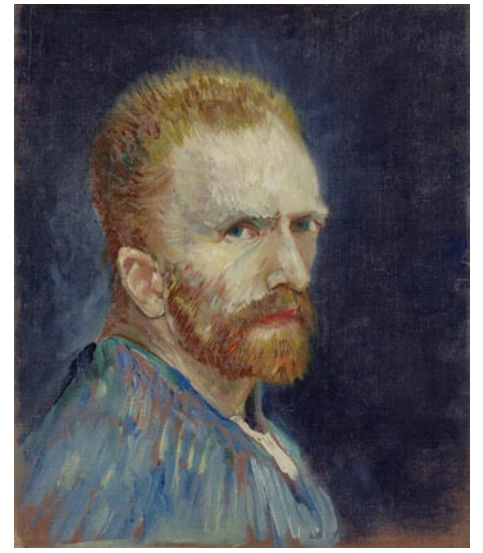
ence, SC, is presenting *Out of Paradise*, featuring paintings by Jim Boden, on view in the FCM Waters Gallery, through Dec. 13, 2019. The exhibition will be composed of works created by Boden during the last ten years. Boden is Professor Emeritus at Coker University, Hartsville, SC, where he taught from 1999 to 2016. Boden's lush and darkly toned paintings are figurative in more ways than one, frequently using the human body as a means of expressing personal and cultural tensions. The exhibition's title is taken from the artist's most recent series, which depict modern man and woman in an ambiguous, sometimes surrealistic landscape, evoking biblical references to Adam and Eve's exit from Eden. For further information call the Museum at 843/676-1200 or visit ([www.flocomuseum.org](http://www.flocomuseum.org)).



Work by Betsy Havens

Franklin G. Burroughs-Simeon B Chapin Art Museum in Myrtle Beach, SC, is presenting two exhibitions by two Georgetown, SC-based artists, including: *Congregate*, featuring works by Betsy Havens and *Rhythm & Hues*, featuring works by James Calk, both on view through Dec. 15, 2019. Two basic human needs have been universally expressed throughout human history: the need for connection and the need for expression. Two Georgetown based artists offer their interpretations of these aspects of humanity in a pair of exhibitions. Betsy Havens' exhibit explores people's need to gather in a variety of settings from cafes to street markets and in large congregations of faith, through a series of figurative paintings. James Calk's exhibit offers abstract landscapes of brilliant colors in oils that offer a visual representation of the rhythms and tonalities of musical compositions. For further information call the Museum at 843/238-2510 or visit ([www.MyrtleBeachArtMuseum.org](http://www.MyrtleBeachArtMuseum.org)).

The Columbia Museum of Art in Columbia, SC, is presenting a major exhibition entitled, *Van Gogh and His Inspirations*, on view through Jan. 12, 2020. Organized by the CMA and presented by the Blanchard Family, *Van Gogh and His Inspirations* is an original exhibition that brings the work of one of the most beloved artists in the world to Columbia, alongside a variety of handpicked paintings and drawings that shaped his vision. In addition to the Smith/Naifeh collection used as its foundation, *Van Gogh and His Inspirations* includes



Vincent Van Gogh, "Self-Portrait", c. 1887. Oil on canvas. Wadsworth Atheneum Museum of Art, Hartford, CT, Gift of Philip L. Goodwin in memory of his mother, Josephine S. Goodwin, 1954.189.

loans from 12 museums across the US to explore the development of Van Gogh through the lens of the artists who inspired him. The exhibition also brings 12 paintings and drawings by Van Gogh himself, including an outstanding painting of flower fields from the National Gallery of Art, a sensitive painting of a peasant weaving from The Boston Museum of Fine Art, and the world-famous self-portrait from the Wadsworth Atheneum Museum of Art. Side-by-side with their inspirations, these works offer visitors a window into the mind of Van Gogh. For further information call the Museum at 803/799-2810 or visit ([www.columbiamuseum.org](http://www.columbiamuseum.org)).



Michelle Van Parys, "Overpass with Smokestack", 2015, South Carolina, Selenium toned gelatin silver print.

Appalachian State University in Boone, NC, is presenting *Beyond the Plantations: Images of the New South*, featuring photographs by Michelle Van Parys, on view in the Mezzanine Gallery of the Turchin Center for the Visual Arts, through Feb. 8, 2020. Images of the Old South are often sanitized views of a perfect and prosperous plantation life yet ignore the conflict, conquest, and transformation that is manifested in the changing landscape. The photographs from *Beyond the Plantations: Images of the New South* present the contemporary southern landscape in all of its rich complexity. Van Parys offered the following artist's statement, "The photographs from *Beyond the Plantations: Images of the New South* present the contemporary southern landscape in all of its rich complexity. These images examine the layers of change within the human-inhabited landscape - geological, archeological, historical, cultural, and ecological. I see the landscape as dynamic representation of the complex relationship we have with our surroundings over time. It is the accumulation of layers of human trace within this verdant landscape that drives this series of photographs." For further information call the Center at 828/262-3017 or e-mail to ([turchincenter@appstate.edu](mailto:turchincenter@appstate.edu)).



Carolina Arts is now on  
Twitter!

Sign up to follow  
Tom's Tweets, click below!  
[twitter.com/carolinaarts](https://twitter.com/carolinaarts)