

# Groewood Gallery in Asheville

continued from Page 31

but sold before our local collector could get to it. I had to draw my pieces from a photo of the one in the Museum.”

If you plan on seeing the exhibit, and want to learn more about Eleanor Vance and Charlotte Yale, you can take a guided history tour, which starts at the Biltmore Industries Homespun Museum located next door to Groewood Gallery. The tour touches on Vance and Yale’s time spent in Asheville, before they relocated to Tryon and founded their new company. Tours are offered Wed. - Sat. at 1pm and will run through the end of December. You can learn more by visiting ([www.groewood.com/history-tours](http://www.groewood.com/history-tours)).

Established in 1992, Groewood Gallery is a locally-owned Asheville desti-

nation for fine American-made art and craft. The gallery is located in historic Groewood Village, adjacent to The Omni Grove Park Inn. Biltmore Industries began at this site in 1917 and became the largest producer of handwoven wool in the world by 1930. The 11-acre property, listed on the National Register of Historic Places, also includes working artist studios, a sculpture garden, Golden Fleece restaurant, the Biltmore Industries Homespun Museum, and Asheville’s only antique car museum. Free parking is available on-site.

For further information check our NC Commercial Gallery listings, call the gallery at 828/253-7651 or visit ([www.groewood.com](http://www.groewood.com)).

## Pink Dog Creative in Asheville, NC, Features Works by Ralston Fox Smith

Pink Dog Creative, located in Asheville, NC’s, River Arts District, will present *Furtherance*, featuring works by contemporary artist, Ralston Fox Smith, on view from Nov. 10 through Dec. 17, 2017. A reception will be held on Nov. 10, from 6-9pm.

Smith has earned a strong following among collectors: his paintings hang in private and public collections around the world.

*Furtherance* represents a progression and transformation of vision as Smith has explored abstract and surreal landscapes and pushed beyond into the world of pure geometric abstraction. This exhibit is an opportunity to explore that evolution and to revel in his most recent compelling work.

The geometry of nature - from tree trunks and boulders to vast crop fields - have long been the building blocks of Smith’s work. The sharp lines and angles of man-made structures have also fueled

the evolution of clean and ordered constructs in his work. With his newest collection, Smith has pushed further into the role of geometry, spatial relationships, and inherent positive and negative balance. On a two-dimensional surface, Smith expresses his response to chaotic energy through dynamic geometric constructs in a clean hard-edged manner. *Furtherance* is your chance to tap into that spirited power, which Smith calls both “honest and uplifting.”

Ralston Fox Smith grew up in southeastern New Hampshire and later attended Amherst College as well as the Santa Monica College of Design, Art and Architecture. He lives in Asheville with his amazing wife, two children and large dog, and shares a large studio north of downtown on the French Broad River with three exceptionally talented artists.

For further information check our NC Commercial Gallery listings or visit ([pinkdog-creative.com](http://pinkdog-creative.com)).

## 20th Voorhees Family Art Show and Sale Takes Place in Asheville, NC - Nov. 18 & 19, 2017

The 20th Voorhees Family Art Show and Sale will be held on Nov., 18, from 10am to 5pm and Nov. 19, from 10am to 4pm at Susan Voorhees’ home, 55 Woodward Avenue in the Norwood Park area of North Asheville, NC. This weekend art show and sale is free and open to the public.

This year’s annual event will feature new art work created by five Voorhees family members along with two guest artists. The event will again be featured in a family home in Norwood Park, this year at Susan’s house. Meet this extraordinary family of artists known throughout North Carolina and the Southeast. A portion of the proceeds will be donated to MANNA FoodBank and to Kiva, helping others locally and globally.

The arts legacy began with Edwin Voorhees, (1919-1999) known for his NC coastal watercolor seascapes; and Mildred Voorhees and now their children and grandchildren. Mildred, (1924-2007) was best known for her colorful, patterned watercolors and rich oil still lifes and landscapes. Reproductions of Edwin and Mildred’s artwork will be available.

Edwin had long wanted to host a family art show as a way of gathering the clan and sharing the varied talents of those

working in the arts. So, the first Voorhees Family Art Show was held in the family home in Morehead City, NC, in 1998. Edwin passed away the next year but the Voorhees Family Art Show continued in Morehead for several years. In later years the show was held in Asheville in addition to Morehead City. With Mildred’s move to Asheville the show followed with it being hosted in one of several Voorhees family homes in North Asheville. This year’s show celebrates the 20th show for the Voorhees Family and continues the legacy begun by Edwin Voorhees back in 1998.

Three of Edwin and Mildred’s six children plus one grandchild and a daughter-in-law will be showing their work at this event including: Susan Voorhees, oil and pastel paintings; Jane Voorhees, watercolors, pastels, prints, cards and calendars; David Voorhees, wood-fired stoneware and porcelain pottery; David’s wife, Molly Sharp Voorhees, sterling silver jewelry, some incorporating natural beach stones; and David’s daughter Elizabeth Voorhees Becker, color photography. Also exhibiting are guest artists Chad Alice Hagen, felted art and handmade books and Cheryl Stippich, stained glass.

For further information and map visit ([www.voorheesfamilyart.com](http://www.voorheesfamilyart.com)).

## London District Studios in Asheville, NC, Features Works by Julie Miles

London District Studios in Asheville, NC, will present *The Surface of Belonging: Exploring the Spectrum from Isolation to Inter-relatedness*, featuring works by Julie Miles, on view from Nov. 5 - 30, 2017. A reception will be held on Nov. 8, from 5-10pm.

What healing lies beyond hurt and hate? How can we coexist, celebrating our diversity and exploring our common threads of being human? These questions initiated a journey for painter Julie Miles. Wanting to experience the spectrum of

continued above on next column to the right

## Pottery Classes @ TC Arts Council




**Coffee & Clay**  
Introduction to Pottery  
Tuesdays, October 31 - December 5  
9:30 am - 12:30 pm  
Six Classes \$240 + Clay

-----

**Open Studio Day Time**  
Mondays & Wednesdays  
November 1—27 • December 4—13 • January 8—31  
9:30 am—12:30 pm  
Eight Classes \$150 + clay • Four Classes \$75 + clay

-----

**Open Studio Evening**  
Tuesdays & Thursdays  
Oct. 31—Nov. 28 • Dec. 5—14 • Jan. 9—Feb. 1  
6:00 pm—9:00 pm  
Eight Classes \$150 + clay • Four Classes \$75 + clay

-----

**Introduction to Wheel Throwing**  
Tuesdays & Thursdays  
9:30 am—12:30 pm  
Nov. 2—30 • Jan. 9—18 • Jan. 23—Feb. 1  
Four Classes + three practice sessions  
\$240 + clay

**TC Arts Council**  
349 South Caldwell Street • Brevard, NC  
828.884.2787 • [www.tcarts.org](http://www.tcarts.org)

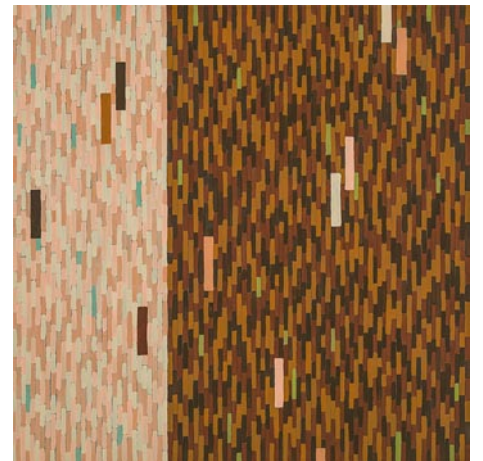
complete isolation to that of total inter-relatedness, she has made a series of paintings spanning fourteen linear feet with well over 8,000 painted lines.

The color palette is comprised of a variety of skin tones to show that wherever we are, our life experiences and social conditionings shape our perceptions. Each line represents a person somewhere on this earth, with a wish that they may know love and a sense of belonging in community.

Working at her studio in Pink Dog Creative in the River Arts District of Asheville, Miles has loved talking with many studio visitors about the work. Her favorite guests have been the children that have sat in front of these paintings. “How many lines do you see,” she will ask. “A million,” one will say. “No, a billion.” The artist hopes these pieces will provide a place for people to start a dialog about our unique differences and the common threads we all share.

“This project was so humbling,” says Miles, “sending me on a journey to uncover my own blindness and the illusions of separateness I have created for myself. It has been a transformative experience.”

She was often inspired by the band



Work by Julie Miles

Cloud Cult, that sings, “So if ever I can’t see the magic around me, please take my hands off my eyes.”

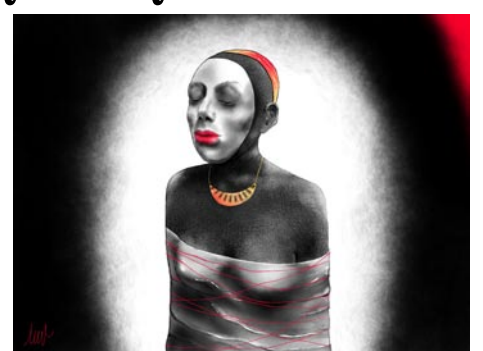
Miles will donate 10% of the proceeds from sold work to benefit the Life After Hate organization, whose mission is to inspire individuals to engage in compassion and forgiveness, for themselves and for all people.

For further information call Wendy H. Outland of WHO KNOWS ART at 828/231-5355 or visit ([www.whoknowsart.biz](http://www.whoknowsart.biz)).

## Toe River Arts Council in Burnsville, NC, Offers Works by Mary Ruth Webb

Mary Ruth Webb is an artist. Her show *Conversions* will mark the end of the year at the Toe River Arts Burnsville Gallery with an expressive display of determination, and talent. This final 2017 exhibition begins Nov. 25, and culminates on Dec. 30, 2017. On Dec. 15 from 5 to 7pm, Toe River Arts will host a free reception welcoming the public to meet the artist and share the delicate intricacy and mystery of her work.

Webb is a sculptor, book maker, and two-dimensional and digital artist. Her work draws you in, causes you to think, ask a question. Yet, at the same time, her images engage your eyes with the beauty of detail.



Work by Mary Ruth Webb

You want to peek behind her wall work, flip the page in her handmade books just to see the back of the piece. Corre-

continued on Page 33