

NC Institutional Galleries

continued from Page 69

Bryant". Hal Bryant's art pieces are prominently featured in collections across the Carolinas. With a prolific career spanning since 1972, Bryant has contributed over three hundred paintings to various private, business, and corporate collections. His artistic repertoire encompasses a diverse range. From intricately capturing architectural details in acrylic and watercolor to portraying the allure of natural landscapes through an impressionistic lens using pastels. Moreover, Bryant's profound influence extended to his role as an educator, teaching Visual Art and Photography at Cleveland Community College for over three decades, nurturing and inspiring numerous artists in their creative pursuits. Hours: Mon.-Fri., 10am-4pm & Sat., 10am-2pm. Contact: 704/484-2787 or at (<https://www.ccartsCouncil.org/>).

Siler City

North Carolina Arts Incubator Gallery, 223 N Chatham Ave., Siler City. **Ongoing** - Featuring the handcrafted work of over 30 Incubator and regional artists in a variety of mediums including painting, pottery, stained and fused glass, fabric art, cards, photography, wood, jewelry, metal, baskets and more. There is a broad range of items and prices. Hours: Mon.-Sat., 10am-5pm; & 3rd Fri., 10am-9pm. Contact: 919/663-2072 or at (www.ncartsincubator.org).

PAF Gallery, 223 N Chatham Ave., Siler City. **Ongoing** - A gallery featuring works by local and regional artists. Hours: 3rd Fri. 6-9pm. Contact: 919/663-2072 or at (www.ncartsincubator.org).

Southport

Franklin Square Gallery, 130 E. West St., Southport. **Ongoing** - Works by members of the Associated Artists of Southport. Hours: Mon.-Sat., 10am-5pm. Contact: 910/457-5450 or at (www.franklinsquaregallery.com).

Spruce Pine

Spruce Pine Gallery, TRAC Arts Center, Toe River Arts Council, 269 Oak Avenue, Spruce Pine. **Kokol Gallery, Through Oct. 19** - "Juried Halloween Exhibition". **Nov. 2 - Dec. 31** - "Artist Market". **Owen Gallery, Through Oct. 12** - "Mary Lynn Bowman and Jim Bowman, Paintings and Sculpture". **Oct. 24 - Nov. 4** - "Fall Studio Tour Preview Exhibition". **Nov. 8 - 10** - "Plein Air at the Orchard Exhibition". **Ongoing** - Toe River Arts will feature artist demonstrations and continue to sell artist's work in the gift shop. Hours: Tue.-Sat., 10:30am-5pm. Contact: 828/682-7215 or at (www.toeriverarts.org).



Works from the Spruce Pine Potters Market

ALTERNATE ART SPACES - Spruce Pine **Cross Street Building**, 31 Cross St., Spruce Pine. **Oct. 12 & 13, from 9am-5pm** - "16th Annual Spruce Pine Potters Market (SPPM)". The show features over thirty potters from Mitchell and Yancey counties. Admission is free. In the beautiful western NC mountains, scattered in Mitchell and Yancey counties, live and work some of the finest nationally and internationally known clay artists in the field today. SPPM is an annual weekend gathering, organized collaboratively by clay artists, that always takes place on the second weekend in October. Clay enthusiasts will experience a unique opportunity to see a wide variety of new clay work and visit with exceptional artists in one convenient and convivial spot. For further info visit (www.SprucePinePottersMarket.com).

Statesville

Louise Gilbert Art Gallery, Mitchell Community College, 420 Walnut Street, Statesville. **Ongoing** - For more than 25 years, the Louise Gilbert Art Gallery, hosted and curated by Mitchell's Department of Art, has played a vital role in the visual arts in Iredell County. The Gilbert Gallery serves as a vibrant space for students and visitors to explore ideas, techniques, forms and mediums. Our exhibits and installations feature award-winning local, national and international artists whose work includes traditional, folk, outsider and experimen-

tal styles. Hours: Mon.-Fri., 8am-5pm. Contact: call 704/878-3271.

Sylva

Gallery One, Home of the Jackson County Visual Arts Association, 604 West Main Street, Sylva. **Ongoing** - The gallery is home to over 20 artists local to the area. Gallery 1 is a not for profit gallery operated as a club to provide a space for professional and emerging artists to share their artistic endeavors, display works sold to help support their vocation. Hours: Thur.-Fri., 11am-3pm and Sat., noon-4pm. Contact: Tim Lewis 828/337-3468 or James Smythe 828/507-4248.

Tryon

Tryon Arts and Crafts School, 373 Harmon Field Rd., Harmon Field, Tryon. **Through Oct. 18** - "Bayard Wootten Photography Exhibition". The Bayard Wootten exhibition will highlight her remarkable photography of the western Carolina mountains, with special focus on Tryon. It will feature newly printed works from her original negatives, many of which have never been displayed before. This exhibit will be the largest-ever gathering of Wootten's work, offering a rare glimpse into her connection to our region. The exhibit also includes original photographs from local artists that capture the essence of the extended Polk County region. **Gift Shop, Ongoing** - Gift Shop features juried works by regional artisans to selected work produced by our instructors and students. Hours: Mon.-Fri., 9am-4pm & Sat. 9am -1pm. Contact: 828/859-8323 or at (www.tryonartsandcrafts.org).

Upstairs Artspace, (Celebrating over 40 Years) 49 South Trade Street, Tryon. **Oct. 6 - Dec. 20** - "Dale McEntire: Reflections Along the Path." A reception will be held on Oct. 6, beginning at 2pm. Hours: Tue.-Sat., noon-5pm. Contact: 828-859-2828 or at (www.upstairsartspace.org).

Valdese

Valdese Heritage Arts Center, 146 Main Street West, Valdese. **Ongoing** - The center offers a great selection of unique gifts on exhibit and for sale, including, but not limited to original paintings, pottery, needlework, wood-carvings, hand crafted furniture, ceramic sculptures, stained glass, photography, jewelry, floral arrangements greeting cards, quilts and home made soap. Hours: Mon.-Fri., 9am-5pm & Sat., 11am-3pm. Contact: 828/874-1849 or at (<http://vhac.webs.com>).

Washington

River Walk Gallery and Arts Center, 139 W. Main Street, Washington. **Ongoing** - All work is done by local artists and has to be juried into the gallery. The gallery includes watercolor, oil, and acrylic paintings, photography, pottery, mixed media, fiber arts, jewelry, wood work, stained glass, and books written by local authors. Hours: Mon.-Sat., 10:30am-5pm. Contact: 252/974-0400.

Waynesville

Little Gallery on Church Street, 37 Church Street, Waynesville. **Ongoing** - Featuring monthly exhibits by regional arts. Sponsored by the Haywood County Arts Council. Hours: Mon.-Fri., 9am-5pm. Contact: 828/452-0593 or at (www.haywoodarts.org).

The Museum of North Carolina Handicrafts, 307 Shelton Street, corner of US 276 So. and Shelton Street, Waynesville. **Ongoing** - Featuring the handicrafts of North Carolina in the historic Sheldon House. Hours: Museum hours change seasonally, call 828/452-1551.

Wentworth

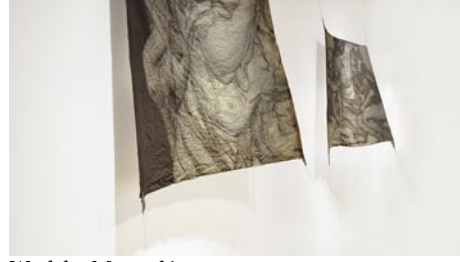
Dan River Art Market & Gallery, 1122 NC Hwy. 65, Wentworth. **Ongoing** - The gallery offers art and craft by local artists and 6 gallery exhibits throughout the year, workshops and lectures. Hours: Thur., 10am-4pm; Fri., 11am-2pm; and by appt. Contact: 336/349-4039.

West Jefferson

Ashe Arts Center, 303 School Ave., West Jefferson. **Through Oct. 7** - "Ashe County Piece-makers Quilt Guild Exhibition". **Oct. 10 - Nov. 18** - "Best of the Blue Ridge Juried Exhibition." **Nov. 21 - Dec. 31** - "Tree Fest and Christmas Miniatures". Hours: Mon.-Fri., 10am-5pm & Sat., 10am-4pm. Contact: the Ashe County Arts Council at 336/846-2787 or visit (www.ashecountyarts.org).

Wilmington

ACES Gallery, Arts Council of Wilmington and New Hanover County, 221 N Front Street, Suite 101, Wilmington. **Through Oct. 22** - "Frogs & Fantasy," featuring works by Jessie and Janna Robertson. Hours: Mon.-Fri., 10am-5pm. Contact: 910/343-0998 or at (www.ArtsCouncilofWilmington.org).



Work by Megan Young

Cultural Arts Building, ground floor, corner of Randall Parkway and Reynolds Drive, UNC-Wilmington, Wilmington. **CAB Art Gallery, Through Oct. 30** - "Megan Young: Charting the Course". Charting the Course is an interactive installation that maps the complexity of inherited histories. Viewers talk with Carry, a custom AI StoryCatcher, to hear the multifaceted experiences of women impacted by migration and displacement. She invites them to contribute their own stories, too. The project explores the intersections of AI technology, digital heritage, and our dreams for the future. Hours: Mon.-Fri., noon-4pm. Contact: call art dept. at 910/962-3440 or at (www.uncw.edu/art/gallery).

Louise Wells Cameron Art Museum, @ intersection of Independence Blvd. & South 17th Street, Wilmington. **Through Oct. 20** - "The Work of Their Hands". The anchor work of "The Work of Their Hands" is a tulip quilt made 170 years ago by an now unknown, enslaved woman in North Carolina. Through her masterful stitchwork and time-honored design, this unknown artist sewed a story of strength and perseverance. Spinning forward from this quilt and its practice, The "Work of Their Hands" explores the continuing legacy of quilt-making and the evolution of textile art, starting with traditional quilts made for bedcoverings to contemporary fabric artworks by artists like Celeste Butler, Michael Cummings, Gee's Bend quilters, Michael James, Beverly Smith and others. **Through Feb. 16, 2025** - "Thomas Sayre: Four Walls". A reception will be held on Apr. 26, from 6-9pm. An artist talk will be held on Apr. 27, from 11am-noon. The exhibit features new and never exhibited works by American artist Thomas Sayre. Each of the four large-scale pieces in the installation questions the belief systems and symbols that underpin the ideals of church, nation and creation. Made of materials that include tar, smoke, fabric gowns, gunshots, welding material, earth and fire, these works invite visitors to draw close and experience the messiness of making, and by analogy, to bear witness to the ways that life invades, entangles, and tarnishes us. **Ongoing** - Cameron Art Museum presents the only sculpture park in the country created to honor the United States Colored Troops and their fight for freedom. The opening of PNC USCT Park marks the one-year anniversary of the unveiling of Boundless, the public sculpture by artist Stephen Hayes that commemorates the United States Colored Troops and the Battle of Forks Road. This park creates a gathering space for the more than 60,000 visitors from across the country who come to CAM each year and the 8,000 school children who visit the museum on field trips. PNC USCT Park will become a community space for gathering, field trips, classes, workshops, storytelling, live music and USCT living history events for years to come, in which the sculpture Boundless will be the centerpiece. **Pancoe Art Education Center, Exhibition Cases, Ongoing** - View some of the Seagrove and contemporary pottery from the museum's permanent collection in the cases. These include the works of resident artist Hiroshi Sueyoshi, Ben Owen III and Jugtown Pottery among other works. Admission: Yes. Hours: Tue.-Sun., 10am-5pm and Thur. till 9pm. Contact: 910/395-5999 or at (www.cameronart-museum.org).

Wilma W. Daniels Gallery, Cape Fear Community College, 200 Hanover Street, first floor of the Hanover Parking Deck, Wilmington. **Through Nov. 8** - "Open Source Group Show." Hours: Mon.-Fri., noon-5pm. Contact: call 910/362-7252 or at (<http://cfcc.edu/blogs/wil-magallery/>).

WAA Gallery Citrine, 17 S 2nd Street, Wilmington. **Through Dec. 31** - "Fall 2024 Exhibit," featuring works by over 30 Wilmington Art Association artists. **Ongoing** - Featuring works by BJ Grimmer, PD Chisholm, Kathy Schrum Peck, Nancy Lang Miller, Brooke Eagle, Deb Williams, Meroe Wheatley, Sue Cunningham, Chris Pfund, Donna Launey, and Robin Jones. Hours: Thur.-Sat., 11am-6pm or by appt. Contact: e-mail to (gallerycitrine@gmail.com) or at (<https://gallerycitrine.com/>).

ALTERNATE ART SPACES - Wilmington **Airlie Gardens**, 300 Airlie Road, Wilmington. **Ongoing** - Located two miles west of Wrightsville Beach in Wilmington, North Carolina, Airlie Gardens encompasses 67 acres of walking paths, a freshwater lake, and formal gardens that showcase seasonal blooms, mighty live oaks, historic structures, and contemporary sculpture. Airlie is a member of the North Carolina Birding Trail, and it's diverse ecosystems provide unique habitats for a variety of colorful wildlife. Discover what makes Airlie Gardens a premiere garden of the South and a prime destination spot for garden and nature lovers from around the world. Come discover the beauty. Admission: Yes. Hours: Tue.-Sun., 9am-5pm Contact: 910/798-7700 or at (www.airliedgardens.org).

Burgwin-Wright House & Gardens, Visitor Center, 224 Market St. Wilmington. **Through Oct. 19** - "Inspiration In Pastel," presented by the Coastal Carolina Pastel Painters. Hours: Mon.-Sat., 10am-4pm. Contact: 910/762-0507.

New Hanover County's Government Center, second floor, 230 Government Center Drive, Wilmington. **Ongoing** - "Home in the Cape Fear: Selected Works from Cameron Art Museum, Wilmington, NC," a traveling exhibition which highlights works in Cameron Art Museum's collection and explores how artists have been inspired by their communities and the places they call home. This exhibition includes colorful abstracts, traditional representation etchings, coastal landscapes, still life artwork, public and personal portraits of people in our region, and more. It features the work of Michael Cunningham, Donald Furst, Claude Howell, Hobson Pittman, Robert Postma, Richard Stenhouse, Caroline Von Glahn, Virginia Wright-Frierson, and others. Hours: Mon.-Fri., 8am-5pm. Contact: 910/798-7311 or at (<https://www.nhcgov.com/Facilities/Facility/Details/Government-Center-83>).

Wilson

Barton College, Case Art Building, Whitehead Ave. NE, on the southeast corner of the Barton College Campus, near the intersection of Whitehead and Gold Streets, Wilson. **Virginia Thomson Graves Gallery and Lula E. Rackley Gallery, Through Oct. 10** - "Among Other Things", featuring works by Jeff Bell. **North Corridor Gallery, Through Oct. 10** - "you are here," featuring works by Dee Dee Oliver. **Barton Art Galleries, Oct. 21 - Nov. 22** - "Figural Transitions: Masculinity from Realism to Allegory," featuring works by Artist-in-Residence David Molesky. A reception will be held on Oct. 24, from 5-7pm, with a Gallery Talk at 6pm. **Ongoing** - The galleries operate on a schedule, which coincides with the Barton academic year. Generally the galleries are open from mid-August to mid-May and are occasionally open for receptions and events during the summer months. Hours: Mon.-Thur., 10am-4pm; Fri., 10am-2pm or by appt. Contact: contact Maureen O'Neill, director of exhibitions, at 252/399-6477 or e-mail to (artgalleries@barton.edu).

The American Center for Photographers, at Whirligig Station, 230 Goldsboro Street S, in downtown Wilson. **Ongoing** - The ACP will present monthly photography exhibitions showcasing work from within the USA and beyond. Coupled with the exhibition programming will be education workshops, forums and other photocentric events that will grow public awareness of photographic image makers and generate networks between photographers throughout the world. Hours: Wed., Fri., & Sat., 11am-5pm; Thur., 11am-7:30pm and Sun., 11am-3pm. Contact: 708/271-3042 or visit (www.eyesonmainstreetwilson.com).

Truist Events Gallery, Wilson Arts Center, 204 Nash Street S, Wilson. **Ongoing** - We feature a variety of work from local and regionally known artists at the Wilson Arts Center, rotating work approximately every two months. All gallery exhibits and artist receptions are free and open to the public! Visit our Gallery Shop at the Wilson Arts Center, featuring a variety of handmade and one-of-a-kind treasures from local and regional artists! There are two free parking lots behind the Wilson Arts Center: The Colony Lot (Lot #12) with entrance off Barnes Street and Lot #17 with an entrance off Douglas Street. Hours: Tue.-Sat., 10am-5pm. Contact: 252/291-4329 or at (wilsonarts.com).



View of Vollis Simpson Whirligig Park

Vollis Simpson Whirligig Park, 301 S. Goldsboro Street in downtown Wilson. **Ongoing** - The two-acre park features 30 of Vollis Simpson's

continued on Page 71