

# Redux Contemporary Art Center

continued from Page 4 / [back to Page 4](#)

made using methods commonly thought of as traditional women's crafts but are frequently not appreciated as fine art. At its heart this show is an homage to artists who are also caretakers, how their practices change deeply when a new life stage begins, and how we can perhaps put art before dishes once the kids lay down their heads for the night.

McClellan is a Redux studio artist, with a specialty in fiber art, residing in Charleston with her husband and 3 young sons. Combining punch needle with sewing and natural dying she makes wearable objects like bright cardigans and bags as well as items for the home like plant holders and heirloom stuffed animals and baby teethingers.

McClellan sells her work as well as DIY punch needle kits on her website, in museums and at juried art fairs. In addition to creating she offers her expertise as a maker teaching workshops ranging from punch needle to candle making to indigo dying

in museums, galleries, camps and retreats around the country. Most recently she completed an artist in residency program at the Gibbes Museum of Art and exhibited her first solo show there.

Prior to life in Charleston, McClellan opened gather, a brick and mortar retail shop in San Francisco where she featured over 200 artists and hosted both public and private creative workshops. Some of her largest events were in the form of team building workshops with companies like Etsy, Pinterest, Zen Desk and Nerd Wallet. In addition, McClellan designed a clothing collection for women and young children, founded a bi-annual shopping market for local boutiques, and worked with several artists on joint collaborations.

For further information check our SC Institutional Gallery listings, call the Center at 843/722-0697 or visit ([www.reduxstudios.org](http://www.reduxstudios.org)).

## City of North Charleston, SC, Features Works by Gale Ray and Susan Lenz

The City of North Charleston's Cultural Arts Department is pleased to announce concurrent solo exhibitions of paintings and pottery by Gale Ray (Charleston, SC) and mixed media works by Susan Lenz (Columbia, SC) on display at Park Circle Gallery, from Oct. 5 - 29, 2022. A reception will be held on Oct. 7, from 5-7pm.

Although Ray and Lenz's exhibits are presented as concurrent solo shows, three pieces created collaboratively will also be featured.

In *Inspirations from the Land and Sea*, Gale Ray of Charleston, SC, presents a collection of paintings and pottery that captures the beauty and essence of the Lowcountry. Ray's oil paintings depict sunsets, sunrises, calm marshes, and turbulent storms. Her works in clay are heavily influenced by objects in nature, from oyster shells to bird nests to tree bark. Large statement vessels are made using coil construction techniques and seem to take on a life of their own with distinct personalities.



Work by Gale Ray

"When these pieces are dry enough to handle, I like to hold them in my arms and feel their energy," she explains. With a painter's eye and a potter's hands, Ray continues to be inspired by the landscape she's admired for more than 30 years

Ray is an award-winning fine artist. Her work has been collected throughout the US and Europe and has shown at numerous juried art and craft shows across the country, including the Smithsonian and the Philadelphia Museum of Art. After a lifetime of painting oil on canvas, 34 years as a tapestry weaver, and 15 years as a faux painter, Ray's most recent work focuses on hand building pottery.

She is a member of the National Association of Women Artists, the Art League of Hilton Head, and Lowcountry Ceramic Artists, and currently maintains a studio in Charleston, SC. Her work can be found at the Lowcountry Artist Gallery in Charleston, the Keepsakes Museum Shop at Brookgreen Gardens, and the South Carolina Artisans Center in Walterboro, SC.

For fiber and installation artist Susan Lenz, using multiples of seemingly mundane objects puts into perspective the abundance of life and the capacity to keep things



Work by Susan Lenz

as if for a "rainy day." The mixed media works in her exhibit, *Found Object Mandalas*, feature common household items, like paper clips, keys, bottle caps, buttons, nails, plastic spoons, old clock parts, and more, repetitively hand stitched into meditative patterns on sections of old discarded quilts.

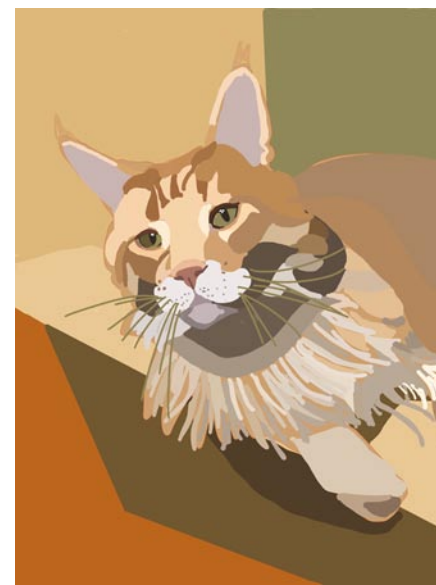
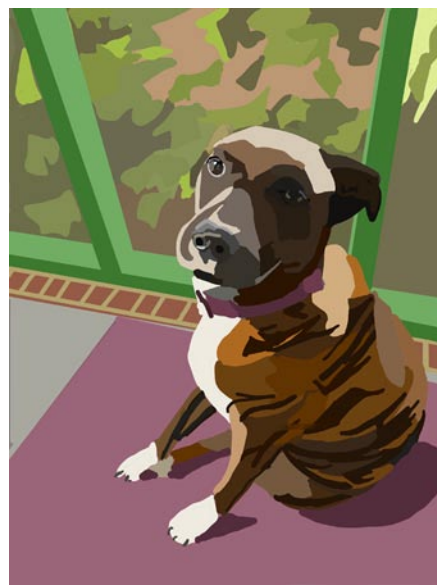
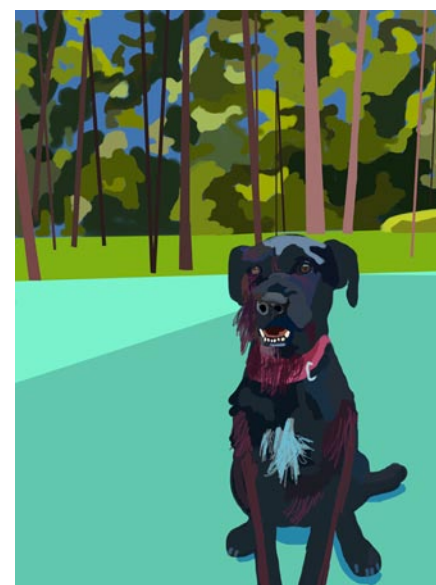
"This process brings an extraordinary new life to otherwise everyday things," Lenz explains. This artwork debuted at the 2021 Philadelphia Museum of Art Craft Show and was more recently part of the 2022 Smithsonian Craft Show.

Born and raised in the US Midwest, Lenz now lives in Columbia, SC, where she creates an eclectic range of masterful work using needle and thread at her downtown studio, Mouse House, Inc. She has studied under several internationally acclaimed artists including Charlotte Miller, Jan Beaney, and Jean Littlejohn, and her installations and fiber art pieces have appeared in national publications, numerous juried exhibitions, and museums, galleries, and fine craft shows throughout the country and abroad.

Lenz's work is in the permanent collection of the Textile Museum in Washington, DC, and the McKissick Museum in Columbia, SC, and is currently represented by the Grovewood Gallery in Asheville, NC.

The Park Circle Gallery is located on Jenkins Avenue in North Charleston. Admission is free and free street parking is available on Jenkins Avenue in front of the gallery, as well as on the adjacent streets and in parking lots close by.

For further information check our SC Institutional Gallery listings, call the gallery at 843/637-3565 or e-mail to ([culturalarts@northcharleston.org](mailto:culturalarts@northcharleston.org)). For information on other Cultural Arts programs and artist opportunities, visit the Arts & Culture section of the City's website at ([www.northcharleston.org](http://www.northcharleston.org)).



K A R Y N H E A L E Y A R T



[Karyn Healey Art Pet Trix](#) • Summerville SC

## Whimsy Joy® by Roz

Therapeutic Expressions for All Ages

Lila's "Blue Porpoise" -- "Floating Along"

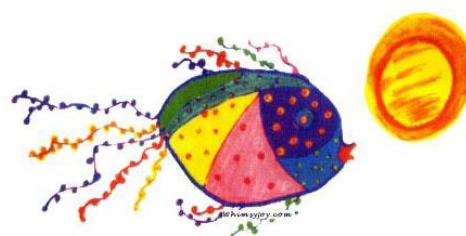
It feels that mental health is "congruency; allowing each of us to choose to "float along".

To have a good life, Roz suggests "we all say what we mean, mean what we say, & do what we say".



Images are available on:  
Prints • Notecards • T Shirts  
Decals • Aprons • Stickers  
Calendars • Mousepads  
Children's Paint Smocks

Check my website for new whimsies!



"Fish & Sun"



"Catch a Falling Heart"

All images are copyrighted

Rosalyn Kramer Monat-Haller M.Ed., LLC

Counseling for Children, Adolescents, & Adults  
Licensed Independent Social Worker - CP

Mother, Grandmother, Daughter, Friend, Psycho-therapist  
and Artist who uses color and whimsical imagination  
to create joyful art for children of all ages

[www.whimsyjoy.com](http://www.whimsyjoy.com)

843.873.6935 • 843.810.1245

The deadline each month to submit articles, photos and ads is the 24th of the month prior to the next issue. This will be October 24th for the November 2022 issue and Nov. 24th for the December 2022 issue.

After that, it's too late unless your exhibit runs into the next month.

But don't wait for the last minute - send your info now.

And where do you send that info?

E-mail to ([info@carolinaarts.com](mailto:info@carolinaarts.com)).