

# SC Commercial Galleries

continued from Page 42

once having viewed it, we are confident you will concur. Hours: Mon.-Fri., 10:30am-5:30pm, Sat., 11am-5pm or by appt. Contact: 843/727-1224 or at ([www.sportsmansgallery.com](http://www.sportsmansgallery.com)).

**The Wells Gallery at The Sanctuary**, at The Sanctuary on Kiawah Island, about 30 minutes from Charleston, in Kiawah's newest and most luxurious resort. **Ongoing** - Featuring a selection of paintings, jewelry and sculptures of some of the Lowcountry's finest artists, Betty Anglin Smith, Shannon Smith, Jennifer Smith Rogers, George Pate, Glenn Harrington, Gary Gowans, Karen Larson Turner, Kim English, Felice Killian, Grainger McKoy and Darrell Davis. Hours: Mon.-Sat., 10am-8pm & Sun., 10am-6pm. Contact: 843/576-1290 or at ([www.wellsgallery.com](http://www.wellsgallery.com)).

**Trager Contemporary**, 577 King Street, Charleston. **Ongoing** - is dedicated to presenting distinctive local, national, and international emerging and mid-career artists working in traditional, nontraditional, and mixed media, from painting and sculpture to installations and works on paper. Not only are we focused on showcasing and cultivating the work and careers of our artists, but we also believe in supporting the practical components of art for creators, enthusiasts, and collectors through gallery talks, workshops and events, and a speaker series. We aim to build a diverse community of people who want to engage with art, broaden the dialogue about culture and contemporary art, and provide a gathering space where all are welcome. Hours: Tue.-Sat., 11am-7pm & Sun., noon-5pm. Contact: 843.882.5464 or at ([www.tragercontemporary.com](http://www.tragercontemporary.com)).

**ALTERNATE ART SPACES** - Charleston **Avondale Therapy**, 815 Savannah Highway, Suite 101, Charleston. **Ongoing** - This space is an ideal location for contemporary art with its concrete floors, high white walls, and dramatic lighting, one has the sense of a New York City gallery verses the hidden gem of West Ashley. Hours: M-F by appt. Contact: 843/870-0278.

**Uncork Charleston**, Charleston's newest wine bar, 476 King Street, Charleston. **Ongoing** - Featuring at least 20 works by Robert Maniscalco. Hours: Wed.-Fri., 5pm - till & Sat.-Sun., 1pm-till. Contact: 854/222-3939 or e-mail to ([info@uncorkcharleston.com](mailto:info@uncorkcharleston.com)).

## Chesterfield

**Douglas Gallery**, 144 Main St, Chesterfield. **Ongoing** - Featuring the works of Jonathan Douglas. Fine art oil and watercolor paintings primarily focused on local scenery painted plein air and in studio. Hours: open by appt. only. Contact: e-mail at ([144main@gmail.com](mailto:144main@gmail.com)) or at ([www.douglasgallery.org](http://www.douglasgallery.org)).

## Columbia Area

**Alicia Leeke Fine Art Studio**, 3821 Edinburg Rd., Columbia. **Ongoing** - Featuring original acrylic cityscapes, abstracts, monotypes, and drawings on canvas and fiber. Giclee's on canvas and paper also available. Hours: by appt. only. Contact: 803/429-5456 or at ([www.alicialeeke.com](http://www.alicialeeke.com)).

**ArtCan Studio & Gallery**, 108 Beaufort Street, Chapin. **Ongoing** - Featuring original paintings, handpainted furnishing, and limited and open edition lithographs by Judy Bolton Jarrett. Hours: Thur. & Fri., noon-5:30pm; Sat., noon-4pm or by appt. (call before coming). Contact: 803/345-6588 or at ([www.judyjarrettgallery.com](http://www.judyjarrettgallery.com)).

**Artsy Fartsy Art Gallery and Coffee Bar**, 906 Knox Abbott Drive, Cayce. **Ongoing** - Featuring art by local artists and cafe and wine bar. We also have MIND GRAVY which is our poetry night every wed 8-10pm. Hours: Wed.-Sat., 7pm-2am. Contact: 803/7084731 or e-mail at ([Ladyartnsoul@gmail.com](mailto:Ladyartnsoul@gmail.com)).

**Bella Vista Art & Framing**, 705 Gervais St., downstairs of City Market Antiques, Columbia. **Ongoing** - Featuring original works of art of varied national artists, regional artists, vintage art, antiquarian engravings and etchings, original photography. Also a Mort Kunstler dealer and large selection of SC artists, giclees, and limited edition prints. And, offering a full service custom framing shop featuring professional, quality framing at below industry prices. Hours: Tue.-Sat., 10am-5:30pm. Contact: 803/765-0808 or e-mail at ([bellavistaart@bellsouth.net](mailto:bellavistaart@bellsouth.net)).

**Carol Saunders Gallery**, 922 Gervais St., Columbia. **Ongoing** - Featuring fine art objects and works by local artists, including Mana Hewitt, Stephen Chesley, Carol Pittman, Mike Williams, Laura Spong, Heidi Darr-Hope, Judy

Hubbard, Jeri Burdick, Clay Burnett, and Eddie Bryan. Hours: M-F, 10am-5:30pm; Sat., 11am-5pm. Contact: 803/256-3046.



Work by Patton Blackwell

**City Art**, 1224 Lincoln Street, Columbia. **Extended Through Dec. 31** - "Four Decades of Patton Blackwell," featuring an exhibit of paintings by Patton Blackwell. Blackwell's work is deeply rooted in her experience of her surroundings, and her desire to translate this experience to the canvas. Blackwell captures the essence of atmosphere and landscape in her use of color, action, and brush stroke. Infused with beauty and passion, Blackwell's paintings embody both the tangible and the intangible. From the lush green rolling fields and dense foliage of Camden, South Carolina, where her home and studio are located, to the streets of Rio de Janeiro during Carnival, to time spent on the Aegean Sea, Blackwell creates mosaics of swirling paint that radiate light and power, reflecting moments and spaces in time that are both active and meditative, universal and timeless. Referencing the works of such artists as Willem de Kooning, and Wassily Kandinsky, Blackwell's paintings recall the physicality and emotion of de Kooning's animated brushwork while evoking the spiritual resonance of Kandinsky's later work. **Ongoing** - Featuring works by Jane Aldridge, Jim Arendt, Randolph New Armstrong, Penny Baskin, Jo Dean Bauknight, Robbie Bell, Kimberly Betchman, Tarleton Blackwell, Angela Bradburn, Betty Bramlett, Joe Byrne, Carolita Cantrell, Kathy Casey, Anne Cunningham, Bob Doster, Gerard Erley, Claire Farrell, Amy Fichter, Tim Floyd, Michael Fowler, Teri Goddard, Harriet Goode, Vanessa Grubbs, Randy Hanna, Shelley Hehenberger, Mana Hewitt, David Kessler, Jan Kransberger, Robert Lyon, Rena MacQueen, Doug McAbee, Fred McElveen, Esther Melton, Max Miller, Lee A. Monts, Marge Loudon Moody, Blake Morgan, Bruce Nellsmith, Heather Noe, Susan Nuttall, Patrick Parise, Ann Hightower-Patterson, Leslie Pierce, Carol Pittman, Sylvia Ady-Potts, Alex Powers, Brian Rego, May Reisz, Tom Risser, Peggy Rivers, Cindy Saad, Sara Schneckloth, Ed Shmunes, Wanda Steppe, Nancy Thompson, Teri Tynes, Yisha Wang, Wendy Wells, Sam Wilkins, Rod Wimer, and Katarina Zaric. This represents a rare opportunity to view a very wide range of acclaimed SC artists at one time. City Art features three distinct gallery spaces. A complete fine artists supply store is located on the lower level. Fine custom designer framing is available at City Art. In addition the Gallery is often host to a variety of events hosted by rental clients. City Art is a wonderful space to enjoy and purchase original art, art supplies, fine framing, take art classes and have wedding receptions, etc. Hours: Mon.-Thur., 11am-4pm; Fri., 11am-3pm; and Sat., 11am-3pm. Contact: 803/252-3613 or at ([www.cityartonline.com](http://www.cityartonline.com)).

**Havens Framemakers and Gallery**, 1616 Gervais St., Columbia. **Ongoing** - Exhibiting paintings by local artists: Jamie Blackburn, Diane Gilbert, Betsy Havens, Rob Shaw, Steven Whetstone, James E. Calk and others. Featuring an extensive collection of handcarved museum quality frames. Art and frame restoration. Hours: Mon.-Fri., 9:30am-6pm; Sat., 10am-5pm. Contact: 803/256-1616 or at ([www.havensframemakersandgallery.com](http://www.havensframemakersandgallery.com)).

**HoFP**, 2828 Devine Street, Columbia. **Ongoing** - Featuring original works of art from around the world and around the corner. Hours: Mon.-Fri., 9am-5:30pm; Sat., 10am-5pm, & by appt.. Contact: 803/799-7405 or at ([www.hofpgallery.com](http://www.hofpgallery.com)).

**if ART Gallery**, 1221 - 1223 Lincoln St., Columbia. **Through Oct. 10** - "Psalm Pageant," a new solo exhibition by Michaela Pilar Brown. The installation stands on its own as a work of art but also will be the setting of four performances by the artists. The performance will feature sound, movement, malt liquor, saffras tea, a cigarette, a foot bath and an elaborate costume with head piece created by Brown. The work will explore the ritual of griev-

ing, both with respect to personal and collective grief, especially in a time when the Covid-19 pandemic has deprived people of many rituals and the human touch. **Ongoing** - Featuring works by Roland Albert, Carl Blair, Michael Brodeur, Michaela Pilar Brown, Beverly Buchanan, Ashlynn Browning, James Busby, Michael Cassidy, Steven Chapp, Stephen Chesley, Diane Kilgore Condon, Jeff Donovan, Mark Flowers, Mary Gilkerson, Klaus Hartmann, Leslie Hinton, Sjaak Korsten, Peter Lenzo, Reiner Mahrlein, Sam Middleton, Jaime Misenheimer, Philip Morsberger, Dorothy Netherland, Marcelo Novo, Jay Owens, Hannes Postma, Anna Redwine, Paul Reed, Edward Rice, Silvia Rudolf, Kees Salentijn, Laura Spong, Tom Stanley, Leo Twiggs, Katie Walker, David Yaghjian and Aggie Zed. Hours: Mon.-Fri., 11am-7pm and Sat., 11am- 5pm. Contact: 803/238-2351 or e-mail at ([wroefs@sc.rr.com](mailto:wroefs@sc.rr.com)).

**Lewis & Clark Gallery**, 1001 Huger Street, behind One Eared Cow Glass, Columbia. **Ongoing** - Featuring work by Clark Ellefson and other contemporary artists. Hours: Mon.-Fri., 9am-6pm; Sat., 9am-3pm & by appt. Contact: 803/765-2405 or at ([www.lewisandclarklamps.com](http://www.lewisandclarklamps.com)).

**Michael Story Studio/Gallery**, 116 Brook Trout Ct., Lexington. **Ongoing** - Featuring traditional landscapes in oil & pastel by Michael Story. Giclee & reproduction prints. Hours by appt. only. Contact: 803/356-4268 or at ([www.michaelstory.com](http://www.michaelstory.com)).

**Mouse House, Inc/Susan Lenz Studio**, 2123 Park St. (historic Elmwood Park), Columbia. **Ongoing** - Featuring the working studio, original fibers, and mixed-media artwork by Susan Lenz. After 14 years at Vista Studios, Susan will now be working at Mouse House. Also offering custom picture framing as well as a wide selection of antiquarian prints and beveled mirrors. Hours: Mon.-Fri., 9:30am-5pm & most Sat., 10am-2 pm. Contact: 803/254-0842; at ([www.susanlenz.com](http://www.susanlenz.com)); or ([www.mousehouseinc.blogspot.com](http://www.mousehouseinc.blogspot.com)).

**Noelle Brault Fine Art**, 2305 Park Street, (historic Elmwood Park) Columbia. **Ongoing** - Noelle Brault is an impressionist artist who utilizes a unique blending of vibrant colors to capture the beautiful light and shadow found in South Carolina's Lowcountry and her native home of Columbia. Hours: by appt. only. Contact: 803/254-3284 or at (<http://www.noellebrault.com>).

**One Eared Cow Glass Gallery & Studio**, 1001 Huger St., Columbia. **Ongoing** - Handblown glass by Tom Lockart and crew, including perfume bottles, ornaments, vases, sculpture, bowls, and paperweights, in all price ranges. Hours: Mon.-Fri., 9am-5pm & Sat., 10am-4pm. Contact: 803/254-2444 or at ([www.oneearedcow.com](http://www.oneearedcow.com)).

**Over the Mantel Gallery**, 3142 Carlisle Street, Columbia. **Ongoing** - OTM Gallery opened in Columbia, South Carolina in 2013 and has since earned awards for "Best Columbia Metropolitan Art Gallery" (2018) and "Best Columbia Metropolitan Gallery for Local Art" (2019). OTM is owned by Julia Moore and operated by Julie Coffey. Its purpose is to offer original artwork to the community at affordable prices. OTM brokers approximately 50 extremely talented artists most of whom maintain residences in the southern states of the US. Hours: Tue.-Sat., 11am-5pm. Contact: 803/719-1713 or at (<https://overthemantel.com/>).

**Prompt Designs Art Gallery**, 3041 N. Main St., near where the train trussel crosses Main St., Columbia. **Ongoing** - Featuring original oils and giclees by Porter O'Brien Dodd. Hours: Mon.-Sat., 10am-6pm. Contact: 803/252-2927 or e-mail at ([promptdesigns@bellsouth.net](mailto:promptdesigns@bellsouth.net)).

**Rob Shaw Gallery and Framing**, 324 State Street, West Columbia. **Ongoing** - The gallery features palette knife paintings by Rob Shaw as well as rotating shows from local and national artists. I have included a calendar for upcoming artists and events on my website Hours: Mon.-Fri., 10am-6pm & Sat., 11am-4pm. Contact: 803/369-3159 or at ([www.robshawgallery.com](http://www.robshawgallery.com)).

**Stormwater Studios**, (formally known as Vista Studios) 413 Pendleton Street, behind One Eared Cow Glass Gallery & Studio and Lewis + Clark Gallery, Columbia. **Ongoing** - Resident artists include: Eileen Blyth, Stephen Chesley, Gerard Erley, Heidi Darr-Hope, Pat Gilmartin, Robert Kennedy, Sharon Licata, Michel McNinch, Kirkland Smith, and David Yaghjian. Hours: Wed.-Sat., 10am-5pm; Sun. 1-4pm or by appt. Contact: at ([www.StormwaterStudios.org](http://www.StormwaterStudios.org)).

**The TRAC Gallery & Studio**, 140 State Street, West Columbia. **Ongoing** - Founded in 2016, Twin Rabbit Artist Collective came together in response to a need for something better for artists and art lovers in Columbia, SC. The

competition for outstanding artwork and teaching positions is fierce, and theTRAC is all about giving working artists a landing pad, a launching site to help further their professional careers as both artists and educators. We knew the best way to help local artists and our community was to create a place just for that purpose. We are local with a network of galleries across the United States, working to make a difference for artists, art lovers, and our community. Hours: Wed.-Fri., noon-7pm; Sat., noon-5pm & Sun., noon-4pm. Contact: 803/381-0498 or at ([www.thetracgalleries.com](http://www.thetracgalleries.com)).

**Village Artists**, Village at Sandhill, 631-8 Promenade Place, next door to Panera, off Two Notch and Clemson Rds., near I-20, Columbia. **Ongoing** - The gallery features the works of 28 local artists offering: workshops, monthly shows and exhibits. Hours: Mon.-Sat., 10am-9pm & Sun., noon-6pm. Contact: 803/699-8886.

**Vista Art & Frame**, 1752 Airport Blvd., Cayce. **Ongoing** - Featuring paintings of the South by Stephen O. Gunter. Hours: M.-Thur., 10am-6pm; Fri., 10am-4pm; & Sat., 10am-2pm. Contact: 803/794-7252 or at ([www.vistaart.com](http://www.vistaart.com)).

**ALTERNATE ART SPACES** - Columbia **Grapes and Gallery**, 1113 Taylor Street, across the street from Oliver's mission, Columbia. **Ongoing** - Serving craft beer, wine bar and painting studio. Hours: Wed.-Fri., 4-9:30pm & Sat., noon-9:30pm. Contact: 803/728-1278 or visit ([www.grapesandgallery.com](http://www.grapesandgallery.com)).

## Conway

**Conway Glass Center**, 708 12th Ave., historic Creel Oil building Conway. **Ongoing** - Featuring an open-air gallery and glass educational studio dedicated to raising the awareness of the visual arts in Conway and Horry County, SC. Hours: Tue.-Sat., 10am-4pm. Contact: 843/248-3558, or at ([www.conwayglass.com](http://www.conwayglass.com)).

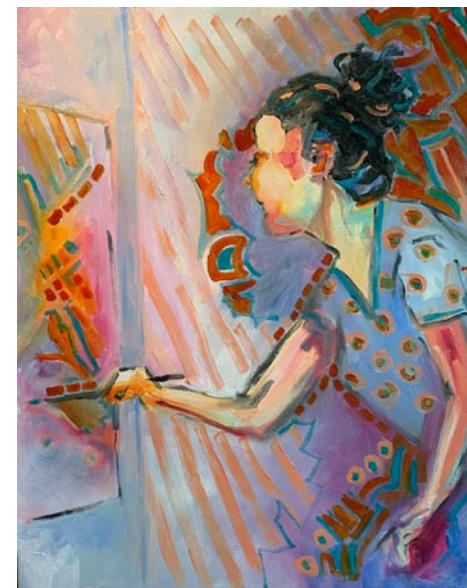
## Denmark

**Jim Harrison Gallery**, One South Main Street, intersection of Main Street and Highway 78, Denmark. **Ongoing** - Featuring works by the late Jim Harrison including original paintings, limited edition prints and a variety of unlimited edition reproductions, bronzes, etchings and other collectible items from Harrison in his more than thirty-year career as an artist. Hours: Tue., Thur., & Fri., 11am-5pm and Wed. & Sat., 11am-3pm. Contact: 803/793-5796 or at ([www.jimharrison.com](http://www.jimharrison.com)).

## Edgefield

**Jane Bess Pottery LLC**, 206 Lynch St., just off of Main St., around the corner from Glass Images, Edgefield. **Ongoing** - Functional stoneware pottery by artist/owner, Jane Bess. Working pottery studio and retail shop featuring many one-of-a-kind items....wonderful entertaining pieces. Hours: Mon.-Fri., 10am-5pm; Sat., 10am-2pm; or by appt. Contact: 803/637-2434 or at ([www.janebesspottery.com](http://www.janebesspottery.com)).

## Florence



Work by Jaclyn Wukela

**Lynda English Gallery-Studio**, 403 Second Loop Rd., Florence. **Ongoing** - Featuring works by local and regional artists in a variety of media. Hours: Mon.-Fri., noon-5pm and by appt. Contact: 843/673-9144 or at ([www.lyndaenglish-studio.net](http://www.lyndaenglish-studio.net)).

**Running Horse Gallery** (Feather Pottery & Interiors, LLC) 928 Old Wallace Gregg Road, Florence. **Ongoing** - Featuring ceramic works by Sasha and Tari Federer. Their artwork is one-of-a-kind, hand crafted, using an array of firing techniques and surface decoration. Hours: 10am-6pm daily, but call first. Contact: 843/992-2178 or e-mail at ([featherpottery@earthlink.net](mailto:featherpottery@earthlink.net)).

continued on Page 44