

# American Folk Art in Asheville

continued from Page 26

A wide range of American Folk Art's potters will be creating special pieces for this show, including the following artists: Rosa and Winton Eugene are self-taught potters from South Carolina; because no one taught them the 'proper' way to create a handle, they experimented with the shape and form until they created a beautiful handle with a little swoop in the middle and a curlicue on the bottom. Not only are these artful additions, the balance is perfect, and it works equally comfortably for both right- and left-handed users.

Shawn Ireland is a gloriously creative North Carolina potter, and a great home cook. His pottery combines his two loves; when he is potting, he thinks of how a piece would work in real life from the oven to the table, and often a handle makes the piece easier to manage, and more fun to look at.

Caroline Cercone, a Tennessee potter, is known for creating remarkably considered restaurant ware. She recently became inspired by earthy tribal masks and began a series of textured and decorated table ware that adds a rustic element to one's table. Subtle handles are an added element of functionality to her intricate designs.



Work by Shawn Ireland

We are excited to share our love of the ultimate joy and usefulness of regional pottery. To use a piece of art that has been so well considered will add a level of pleasure with every use.

For further information check our NC Commercial Gallery listings or visit ([www.amerifolk.com](http://www.amerifolk.com)).

## Groveswood Gallery in Asheville, NC, Features Works by Shawn Krueger

Groveswood Gallery in Asheville, NC, will present *Landscapes of Southern Appalachia*, a solo exhibition of work by painter Shawn Krueger, on view from Oct. 19 through Dec. 31, 2019. A reception will be held on Oct. 19, from 2-5pm.

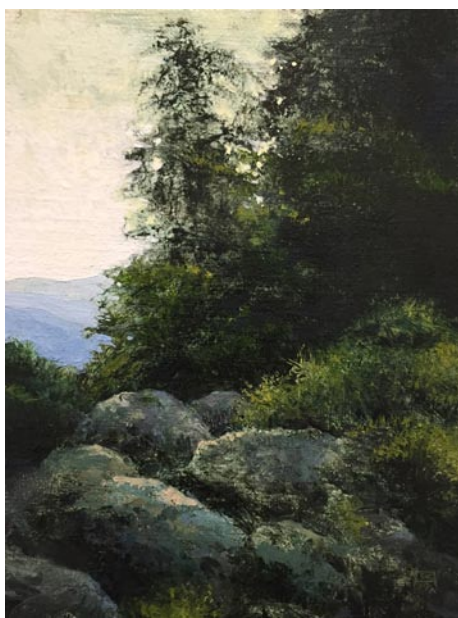
Based in Grand Rapids, MI, Shawn Krueger received a Bachelor of Fine Arts from Calvin College in the late 90s. His approach to painting is rooted in the American Arts & Crafts and Tonalist traditions - both based on love and respect for nature, hand-craftsmanship, and good design.

When asked what drew him to this style, Krueger says, "Their shared ethos is timeless and compelling: Create fully with your head, heart and hand. Use natural materials. Be in tune with nature. I think to some degree the typically warm, low-key color palette found in both genres suits my outlook and temperament as a painter."

*Landscapes of Southern Appalachia* will feature studio works from plein air studies Krueger did on his recent travels in and around Western North Carolina. "As far as subject matter goes, I have found myself recently enamored with the large, old growth Tulip Poplars in the Joyce Kilmer Memorial Forest," says Krueger.

"While their disproportionate scale makes for compelling compositions, it's the almost otherworldly eeriness to some of these massive trees that holds the greatest appeal for me." While exploring the Blue Ridge Mountains, Krueger says he's also enjoyed the challenge of depicting things such as tumbled rocks, rivers and waterfalls. "How does one convey movement in a still image," asks Krueger. "How do I create the roar of rushing water when a painting is inherently quiet? These are the questions that have kept me awake in the past year."

In addition to Groveswood Gallery, Krueger also showcases his work at the National Arts and Crafts Conference each February at The Omni Grove Park Inn. In 2016, he was juried into the highly reputable Roycrofters-at-Large Association (RALA), whose mission is "educating, fostering and inspiring through the continual evolution



Work by Shawn Krueger

of the Arts and Crafts Movement." As of 2019, he is also a signature member of the American Tonalist Society (ATS).

Established in 1992, Groveswood Gallery is nationally recognized for its dedication to fine American art and craft. Located in historic Groveswood Village adjacent to The Omni Grove Park Inn, the gallery is noted for its charming, old-world setting and rich craft heritage. This site once housed the weaving and woodworking operations of Biltmore Industries, an Arts and Crafts enterprise - originally backed by Edith Vanderbilt - that played a significant role in the Appalachian Craft Revival during the early 20th century.

Today, Groveswood Gallery offers two expansive floors of finely crafted furniture, ceramics, jewelry and more, contributed by over 400 artists and craftspeople from across the United States. The gallery also boasts an outdoor sculpture garden and presents rotating exhibitions throughout the year.

For further information check our NC Commercial Gallery listings, call the gallery at 828/253-7651, or visit ([www.groveswood.com](http://www.groveswood.com)).

## The Fall Craft Fair of the Southern Highlands Takes Place in Asheville, NC - Oct. 17-20, 2019

Asheville's long-standing Craft Fair of the Southern Highlands is bringing interactive and dynamic craft to the heart of downtown at the US Cellular Center for its 72nd year. Opening Thursday, Oct. 17 at 10am, the public will have the opportunity to shop and connect with regional, master crafts-

men. This four-day event lasts until Sunday, Oct. 20 at 5pm.

Throughout the event, more than 190 booths of members of the Southern Highland Craft Guild will line the concourse and arena levels of the US Cellular Center.

continued above on next column to the right

These artisans undergo a stringent jury process in which their work is evaluated by peers in the industry, honoring the Guild's legacy of upholding the standards of fine craft. Both contemporary and traditional work in clay, wood, metal, glass, fiber, natural materials, paper, leather, mixed media, and jewelry will be featured.



New to the Craft Fair this Fall are a limited number of guest exhibitors from Piedmont Craftsmen, Carolina Designer Craftsmen, Tennessee Craft, & Kentucky Crafted. Additionally, there will be a range of craft demonstrations with interactive activities for visitors, and a music stage with mountain musicians performing daily.

The Craft Fair has evolved into one of the most popular celebrations of craft in the country since its inception under canvas tents in 1948 in Gatlinburg, TN, on the lawns of Arrowmont School of Arts & Crafts. A shift in landscape for this event, downtown Asheville represents the creativity that flows in Western North Carolina and provides a robust experience for visitors.



Works by Grey Magruder

The Craft Fair of the Southern Highlands is made possible by the following sponsors: *Asheville Citizen Times*, *WNC Magazine*, *Smoky Mountain Living*, *Explore Asheville*,



Work by Tina Curry

*Our State*, and *The Laurel*.

Admission: General \$8.00, Weekend Pass \$12.00, Children under 12 are free.

Cultivating the crafts & makers of the Southern Highlands for the purpose of shared resources, education, marketing, and conservation.

The Southern Highland Craft Guild, chartered in 1930, is one of the strongest craft organizations in the country today. The Guild currently represents nearly 900 craftspeople who reside in 293 counties of 9 southeastern states. During the Great Depression, the Guild cultivated commerce for craftspeople in the Appalachian region. This legacy continues today as the Guild plays a large role in the Southern Highlands craft economy through the operation of four craft shops and two annual craft exhibitions. Educational programming is another fundamental element of the organization, fulfilled through integrated educational craft demonstrations at retail outlets and expos, free educational community events, and an extensive public library located at its headquarters at the Folk Art Center on the Blue Ridge Parkway.

For further information check our NC Institutional Gallery listings or visit ([www.craftguild.org](http://www.craftguild.org)).

Don't forget about our website:

[www.carolinaarts.com](http://www.carolinaarts.com)



You can find [past issues](#) all the way back to August 2004!

You can find [past articles](#) all the way back to June 1999

Also don't forget about our two blogs:

[Carolina Arts Unleashed](#)

[Carolina Arts News](#)

Send us your email address to be added to our list to receive notice of each monthly issue.

[info@carolinaarts.com](mailto:info@carolinaarts.com)