

UPSTATE

Gallery on Main



Susan Lenz
Anonymous Ancestors
 SEPTEMBER 12 - NOVEMBER 4, 2017
 ARTIST RECEPTION- SEPTEMBER 21, 5-8 p.m.

Upstate Gallery on Main is dedicated to contemporary original works of art and exhibitions sponsored by the University of South Carolina Upstate. One of three galleries at USC Upstate, the Upstate Gallery on Main joins the Curtis R. Harley Gallery and FOCUS Art Education Gallery to support the mission of offering exhibitions and activities that cultivate an understanding of art as a discipline, the relationship of art to life, and the historical and societal role art plays for the educated individual.

172 E. Main Street,
 Spartanburg, SC 29306

Gallery hours:
 Tuesday through Saturday
 from 12 – 5 p.m.

UpstateGalleryArt @uscupstategalleryart

uscugalleryart

Contact:
 Jane Nodine
 Gallery Director
 (864) 503-5838
 jnodine@uscupstate.edu

Mark Flowers
 Gallery Coordinator
 (864) 503-5848
 mflowers@uscupstate.edu

UPSTATE
 University of South Carolina Upstate

West Main Artists Co-Op

continued from Page 19

Service, and as a teacher in public and private schools. Her career as an artist began relatively late in life: She took her first studio art course in ceramics at the defunct Spartanburg Arts Center on Spring Street in 2000. Her fascination with water color began with her first class with Sa Smith at the Church of the Advent in 2004. She likes to “color outside the lines,” she said. Her work is playful and expressive, non-traditional and non-representational. She has 12-20 pieces in this exhibit.



Work by Beth Regula

to me, and I did so by focusing on ‘line’ in a very basic way. I started thinking about the myriad ways lines control us from a very early age. We line up, toe the line, sign on the line, color within the lines, don’t cross the lines, etc. All those rules! My next thoughts were about telephone lines, telegraph lines, airlines, lines of sight - all the ways lines might foster communication. Many of the paintings start with a horizontal line that divides the space. What happens in and around the line is what interests me.”

For further information check our SC Institutional Gallery listings or visit (www.WestMainArtists.org).

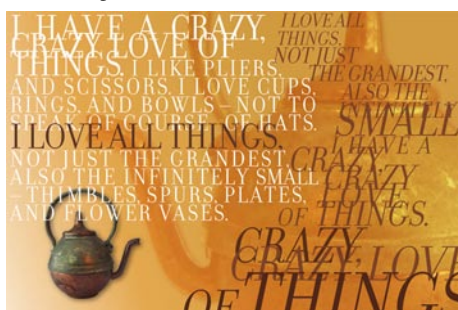
“When I first started thinking about this show about 18 months ago,” Coburn said, “I thought it would be called ‘It’s Lyrical,’ and be a show that played off literal song lyrics that were meaningful to me. I really did not want to reveal that much information about myself. When Beth decided to exhibit with me, we settled on the title *Lyrical Lines*. What I have learned from preparing for this show is that both ‘lyrical’ and ‘line’ in the arts have meanings different from what they might mean for me as an English major.”

“Line implies movement in art. Lyrical implies deeply felt emotion. I had to find a way to approach this idea that made sense

USC Upstate in Spartanburg, SC, Features Works by Dana Ezzell

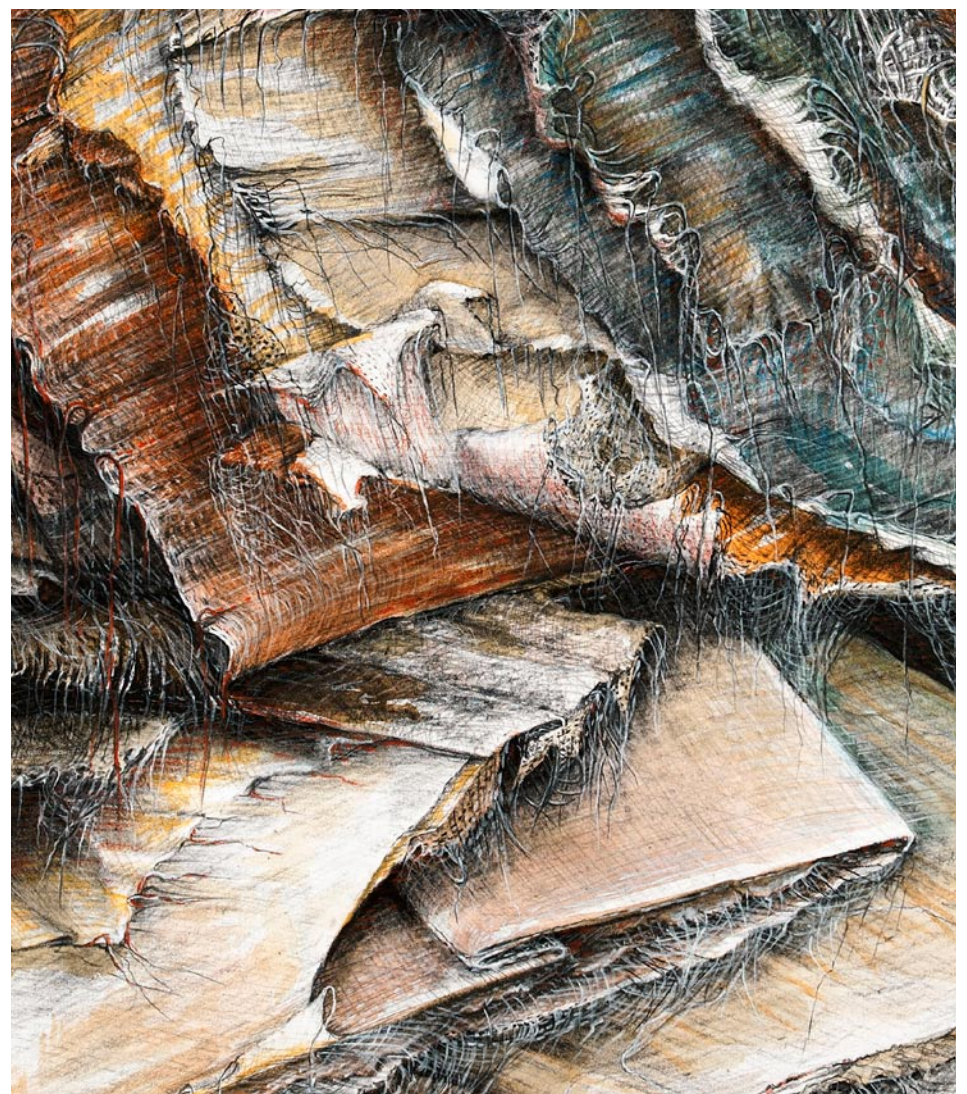
USC Upstate in Spartanburg, SC, is presenting *Envision: In the Presence of Words*, a selection of recent typographic works by Raleigh, NC, artist Dana Ezzell, on view in the Curtis R. Harley Art Gallery through Oct. 27, 2017. A reception will be held on Oct. 5, beginning at 4:30pm.

In her works, which she describes as typographic landscapes, Ezzell emulates the rhythmic tones of poetry in the contrast of overlapping type and blank space. She challenges viewers to look beyond the words themselves to find meaning in the work’s form.



Work by Dana Ezzell

“At its heart and soul, my work is about
 continued on Page 21



UPSTATE 8: SC WOMEN FELLOWSHIP RECIPIENTS

Oct. 2-Nov. 8
 M-TH, 9 a.m.-4:30 p.m.

Lee Gallery
 Exhibit Reception: Oct. 5, 6-8 p.m.
 Panel Discussion: Oct. 19, 6-7 p.m.

The participating artists are Alice Ballard, Patti Brady, Diane Hopkins-Hughes, Terry Jarrard-Diamond, Ellen Kochansky, Linda Williams McCune, Jane Allen Nodine, and Susan Wooten.

This exhibition is supported by the South Carolina Arts Commission, South Carolina Arts Foundation and First Citizens Bank.

