

Exquisite handblown glass gallery and studio in the historic downtown vista arts district. Open to the public Mon. thru Sat. Offering unique and affordable blown glass vases, bowls, flowers, indoor and outdoor lighting, zipper perfume bottles, ringholders, sculpture, ornaments and much, much more. Providing quality, uniqueness, and affordability for 20 years!

Ask about our classes!!



ONE EARED COW GLASS

One Eared Cow Glass, Inc.
1001 Huger St. Columbia, SC
803-254-2444 www.oneearedcow.com

Claire Farrell Monotypes and More



Clouds over Chianti, Oil on Canvas, 36x48



A Certain Glow, Monotype, 30x24

Now on View at the Fine Arts Center of Kershaw County
Exhibition continues through October 16, 2013

Gallery Hours: Monday - Friday
10AM to 5PM
810 Lyttleton St., Camden, SC 29020
www.fineartscenter.org

Studio: By Appointment Only
Please Call (803) 790 8878
www.Clairefarrell.com

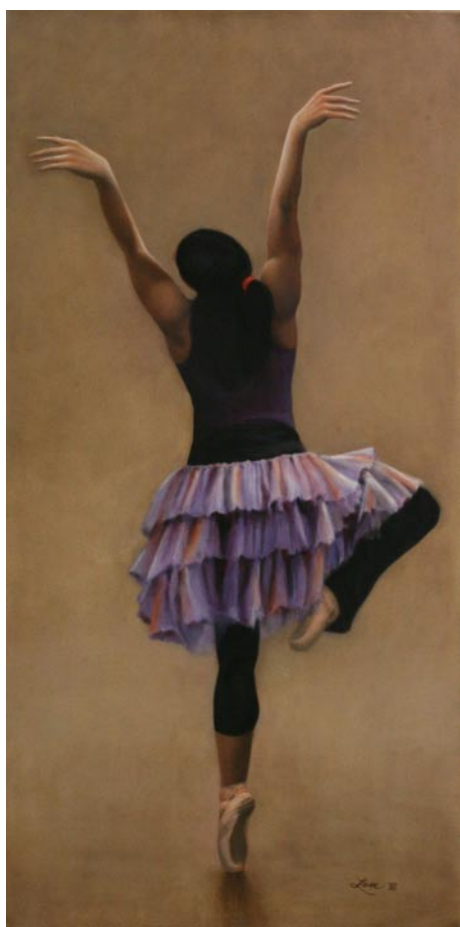
Anastasia & Friends Gallery

continued from Page 31

2013. Her portrait, *The Shoe Groom*, was selected for the 2013 ArtFields regional competition and exhibition in Lake City, SC.

After completing five years of training in classic painting techniques, a solo exhibition in Florence, Italy, and several commissioned portraits of prominent Italians, in 2009, Lowe moved from Italy to Columbia, SC, to be near family. In 2010 she opened a studio in the historic Arcade Building on Main Street in the heart of the city. Specializing in portrait, figurative, and still life oil paintings, she quickly became recognized for her rich brushwork and classic technique. Lowe recently executed the official portrait of former President Charles F. Teague of Spartanburg Methodist College in Spartanburg, SC (SMC) and has been commissioned to paint the portrait of Dr. Edgar H. Ellis for SMC's new academic building, Ellis Hall. A highly respected workshop leader, Lowe gladly shares her knowledge of classic painting methods and in 2013 conducted a two-week course at Columbia Museum of Art on "Painting in the Style of the Old Masters" that was very well received.

For further information check our SC Commercial Gallery listings, call Anastasia Chernoff at 803/665-6902 or e-mail to (anastasiachernoff@gmail.com).



Work by Letitia "Tish" Lowe

University of South Carolina at Sumter, SC, Features Works by Susan Lenz

The University of South Carolina at Sumter, in Sumter, SC, will present *Decision Portraits*, featuring works by Susan Lenz, on view in the University Gallery, located in the Anderson Library, from Oct. 11 through Jan. 27, 2014. A reception will be held on Oct. 11, from 5:30-7:30pm.

Susan Lenz is a professional studio artist in Columbia, SC. Generally using needle and thread for self-expression, she works to articulate the accumulated memory inherent in discarded things. She seeks a partnership with her materials, their purposes, values, and familiar associations.

Lenz's fiber artwork has been widely exhibited in international and national juried exhibitions and as solo installations all over the country. She has been awarded fellowships to attend art residencies at the MacNamara Foundation in Maine, Studios Midwest in Illinois, Hot Springs National Park in Arkansas and the Studios of Key West in southern Florida. Lenz has been engaged for workshops at Slippery Rock University, The Studios of Key West, and the Society of Contemporary Crafts in Pittsburgh, PA.

Lenz's works have claimed three "Best of Show" awards in the fine craft competition, *Palmetto Hands*. Other first place ribbons were earned in the 2011 *National Heritage Quilt Show* at the McMinn County Living Heritage Museum in Athens, TN and in the 2011 *Wearable Arts Awards* in Port Moody, British Columbia as well as in the Will's Creek Survey, Cumberland, MD. Lenz is represented by the Grovewood Gallery in Asheville, NC, and Michele Tuegel Contemporary in St. Petersburg, FL, with work that has won the 2011 Niche Award for decorative fibers and is a finalist in the 2013 competition.

Lenz offers the following statement, "From rising to dying, people make decisions. Some are profound; some are routine; some have significant repercussions; others are cause for celebration. In each instance,



Work by Susan Lenz

more than one option is available and the choice helps define the person making it. This series of portraits examines personal decisions without making value judgment. It focuses on the faces of real individuals and the decisions they made. The titles and words are meant to reflect the choice, confront and challenge the viewer, and stimulate consideration."

Decision Portraits is an installation of two-dimensional, framed portraits. The art quilt portraits are image transfers on tea-stained muslin. Each one includes stitched words. The words and title are meant to reflect the decision made by each person depicted. There is no value judgment being made. This series is not about any social, moral, political or religious interpretation. It is about the decisions. Each work shows a specific person but also suggests others, both individual and universal.

The exhibition brings the public face to face with options made by others. Yet, in this confrontation, one will consider more

continued on Page 33

Carolina Arts is now on
Twitter!
Sign up to follow
Tom's Tweets, click below!
twitter.com/carolinaarts

