

# Woolworth Walk in Asheville, NC

continued from Page 19 / [back to Page 19](#)

materials with a multilayer approach. This heuristic process involves numerous cycles of building up and stripping away. The artist is less concerned with preserving the surface, but rather discovering what lies beneath. His current collection focuses on the transformative power of air and water.

Joey Sheehan's functional and decorative ceramics are meant to enhance any meal, table, or room. These high fire stoneware pots are perfect for everyday use or hosting a special meal. Tiles, multi-piece installations, and large hanging platters will bring color and dimension to every wall and room. These wood and gas fired clay pieces encompass a range of surface, color, and texture and take the form of the smallest mug, bowl, or plate to the largest vases, jars, and sculptures.

For further information check our NC Commercial Gallery listings, call the



Work by Douglas Lail

gallery at 828/254-9234 or visit ([www.woolworthwalk.com](http://www.woolworthwalk.com)).

## Asheville Gallery of Art in Asheville, NC, Features Works by Hal Boyd

The Asheville Gallery of Art in Asheville, NC, will present *Visual Capture*, featuring both figurative and abstract works by Hal Boyd, on view from Oct. 1 - 30, 2013. A reception will be held on Oct. 4, from 5:30-8pm.

Howell (Hal) Boyd studied drawing and painting at the University of Nebraska and the University of Mississippi. He earned a baccalaureate degree from Ole Miss, where his teachers included major American sculptor David Smith and painter Jack Tworikov. In the 1980s, Boyd taught marketing for artists in the BFA program of the San Antonio Art Institute, San Antonio, TX. He is a member and past-president of the Asheville Gallery of Art, Ltd.

Boyd's paintings have been exhibited at the Forum Gallery in New York City, the Brooks Museum of Art in Memphis, TN, the Minas Gallery in Baltimore, MD, and at venues in North Carolina, South Carolina, Texas, West Virginia, and elsewhere. In a half-century career, Boyd



Work by Hal Boyd

has exhibited widely, most recently with a one-person retrospective at the Minas Gallery in Baltimore.

The Asheville Gallery of Art, the longest-established downtown gallery in Asheville, is celebrating its 25th anniversary this year.

For further information check our NC Institutional Gallery listings, call the gallery at 828/251-5796 or visit ([www.ashevillegallery-of-art.com](http://www.ashevillegallery-of-art.com)).

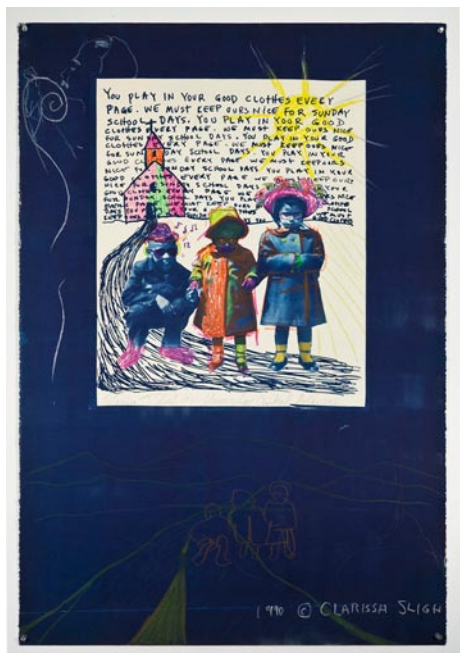
## UNC Asheville in Asheville, NC, Features Works by Clarissa Sligh

UNC Asheville in Asheville, NC, is presenting *Reading Dick and Jane with Me*, an exhibition by Clarissa Sligh, on view in the Intercultural Gallery in Highsmith University Union, through Oct. 21, 2013.

The Dick and Jane books, used to teach reading from the 1930s-1970s, presented an all-white (until 1965) and culturally homogeneous environment, which Sligh says made her feel as a young girl that her family "must be an aberration." In Sligh's exhibition, the children from her neighborhood, excluded from the Dick and Jane series, make their presence felt.

Sligh, who now lives and works in Asheville, describes herself as a storyteller who for more than 25 years has woven together the personal, political and historical in a variety of media including text-based installations, photographs and artists' books. Her images and texts explore perception, ambivalence, duality and transformation - themes that have roots in her own experiences.

Sligh is a recipient of the International Center of Photography Annual Infinity Award (1995) and fellowships from New York Foundation for the Arts (2005), and the National Endowment for the Arts (1988). Her images are in museum collections including those of The Museum of Modern Art in New York, the Victoria

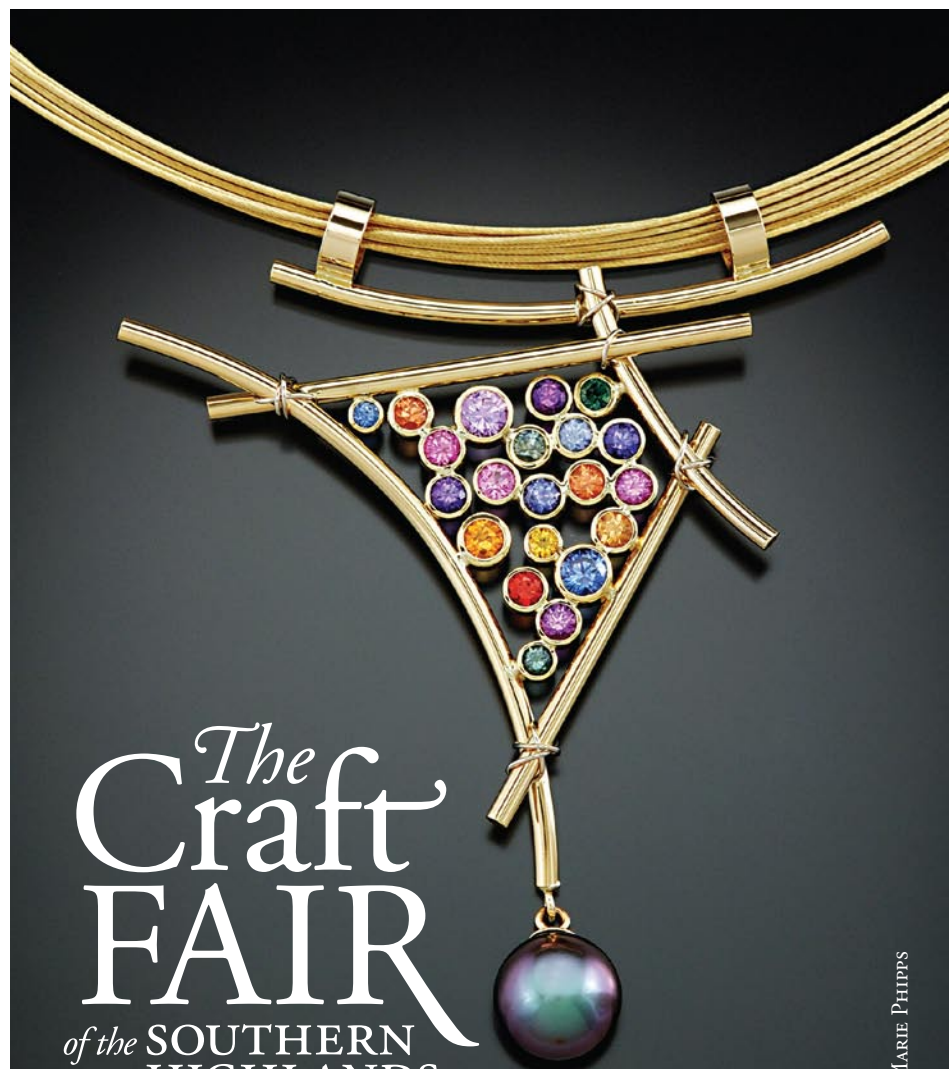


Work by Clarissa Sligh

and Albert Museum in London, and the Museum of Fine Arts in Houston.

A 2012 interview with Sligh can be found at *Art Works*, the official blog of the National Endowment for the Arts.

For further information check our NC Institutional Gallery listings or call 828/251-6991.



## The Craft FAIR of the SOUTHERN HIGHLANDS

October 17 - 20, 2013

U.S. CELLULAR CENTER, DOWNTOWN ASHEVILLE, NC  
THU.-SAT.: 10AM-6PM, SUN.: 10AM-5PM

SOUTHERN HIGHLAND CRAFT GUILD



[WWW.CRAFTGUILD.ORG](http://WWW.CRAFTGUILD.ORG)  
828-298-7928

SUSAN MARIE PHIPPS

## Folk Art Center in Asheville, NC, Offers Exhibit of Tapestries

The Folk Art Center of the Southern Highlands Craft Guild in Asheville, NC, is presenting *Tapestry Weavers South Exhibition: the Beat Goes On*, on view in the Main Gallery through Jan. 12, 2014.

Tapestry Weavers South is an organization dedicated to advancing the art and craft of tapestry weaving.

In 1996 eighteen people interested in Tapestry attended a retreat in Dahlonega, GA, that became the initial meeting for a regional organization of tapestry weavers. From that meeting Tapestry Weavers South (TWS) was formed.

TWS supports the goals of the American Tapestry Alliance (ATA), a national organization. Our membership includes tapestry weavers of all skill levels, primarily in the southeastern states. However, membership in TWS is open to all individuals with an interest in tapestry.

Exhibiting artists include: Sandy Adair, Sue Parker Bassett, Catherine Beckman, Terri Bryson, Helene Cri-Wiesner, Ann Doherty, Nancy Dugger, Bonnie Eadie, Nancy Garretson, Genie A. Greenlaw, Joan Griffin, Gail Tierney Griffith, Louise Halsey, Janet Hasse, Janet E.S. Hart, Betty Hilton-Nash, Susan Iverson, Connie Lippert, Lynn Mayne, Cheryl Migliarini, Sidsel Moreb, John G. Nicholson, Dinah Rose, Jennifer Sargent, Tommye Scanlin, Sue P. Schwarz, Karen R. Shobe, Rosemary Smith, Becky Stevens, Linda



Work by Louise Halsey

Weghorst, Holly Wilkes, Pat Williams, and Joann Wilson.

For further information check our NC Institutional Gallery listing, call the Center at 828/298-7928 or visit ([www.southernhighlandguild.org](http://www.southernhighlandguild.org)).

## NC Arboretum in Asheville, NC, Features Works by Mary Stori

The NC Arboretum in Asheville, NC, is presenting *Quilt Art* by Mary Stori, on view at the Education Center Second Floor Gallery through Oct. 31, 2013.

Stori is an internationally recognized quiltmaker, fashion designer, instructor,

lecturer, and quilt show judge who has authored a cookbook, six quilt books and a DVD, "Mary Stori Teaches You Beading On Fabric". Her newest book is "Embellishing With Felted Wool". Stori is a five-

continued on Page 22

Carolina Arts, October 2013 - Page 21

The deadline each month to submit articles, photos and ads is the 24th of the month prior to the next issue. This will be Oct. 24th for the November 2013 issue and Nov. 24 for the December 2013 issue. After that, it's too late unless your exhibit runs into the next month. But don't wait for the last minute - send your info now.

And where do you send that info?  
E-mail to ([info@carolinaarts.com](mailto:info@carolinaarts.com)).